

23rd Annual
BULL & FEMALE SALE

SATURDAY APRIL 3, 2021

at the farm 1 mile East of

Goodeve, SK

& 3 miles North

SALE AT 1:00PM



Welcome....

Welcome to our 23rd edition of Crescent Creek sales. We would like to firstly thank all of our valued customer base who choose our program year over year to compliment either bull or female selection to further their own operation. This 23rd sale brings forth a very unique offering of proven & exciting new genetics here. The offering represents over 45% sired by bulls raised right here from the exceptional set of brood females that thru the years of selection are able to produce the kind that can be herd bulls. Another 50% of the offering from walking bulls who have been selected for longevity, fertility, and performance. These are the most essential traits key to a breeding program. As you browse the sale offering note the number of lots produced by females in excess of 13 years old. A testament to the production of the cow herd.

Once again a set of bulls with ample testicle development and extra meat & muscle. The young females as always are the cream of the crop and represent the very prolific cow families at Crescent Creek. Thank-you to all who helped put this special event on. Due to the crazy circumstances of the present times, we strongly recommend coming to the farm and viewing this strong offering before sale day. We have been very happy with the results of our pre sale open house. Many have commented on how they enjoyed viewing the offering in larger pens at their leisure. **WE HAVE PICKED MARCH 20 & 21 AS OUR OPEN HOUSE DATES.** The bulls will have been semen tested and lot numbered for viewing. Naturally feel free to come at anytime if need be.

-The Olynkyks



There's A New Kid On The Ranch!

Finley Olynky Anderson

Born: January 21 @ 10:10pm 8lbs 6oz 21.5inches

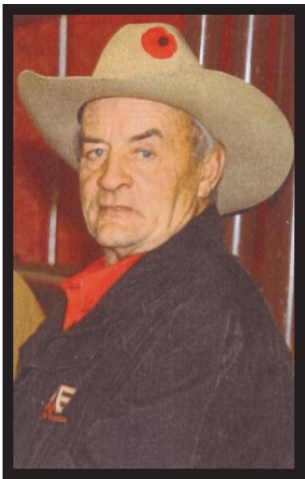


Kyleigh & Orie Are Getting Married!
Summer 2021

In Memorium,

We at Crescent Creek, and the livestock industry, lost two very dear friends this year.

John Simpson has been a close friend, who has spent countless hours bettering the industry and community thru his involvement on many boards & activities, from the Yorkton Exhibition and the Agribition board of directors, to helping with the Theodore Buffalo senior hockey team. We will miss his help at Agribition and 3 pm "tea time" won't be the same without him. The Yards will be missing his signature laugh.



Vlad Pawlyshyn was our neighbour and friend. He did embryo work and preg testing, and was a pioneer in the embryo transfer field, he was the founder of Transtech Genetics, and worked at the University of Saskatchewan, and taught many of the embryo techs working today. Many valuable lessons were learned from his lectures on genetics and reproduction. Vlad always had time to explain what he was doing, and was known to let interested on lookers (Katie) peak in the microscope as he would explain what was going on underneath it. He was dubbed "the man with the golden fingers".



Both will be missed by our family and many others

offering.....

66 BLACK ANGUS YEARLING BULLS 40 TOP CUT BLACK ANGUS OPEN FEMALES

Sale Day Phones

| | |
|--------------------------|--------------|
| SALEBARN | 306.876.4420 |
| WESCELL | 306.728.8284 |
| WADECELL | 306.730.7673 |
| RYAN HURLBURT | 306.292.9812 |
| MARK HOLOWAYCHUK, OBI | 403.896.4990 |
| ROGER PETERS, OBI | 403.828.9815 |
| NATE MARIN, RING SERVICE | 306.869.7130 |
| MARK STOCK, RING SERVICE | 403.357.8104 |
| DARIN BOUCHARD | 204.761.5251 |
| JACKIE SAWLEY | 306.607.9042 |

Sale Videos

VIDEOS AVAILABLE ONLINE FOR VIEWING

WWW.CRESCENTCREEKANGUS.COM

WWW.DLMS.CA

WWW.BUYAGRO.COM

Internet Bidding Available

D | L | M | S
www.dlms.ca

For more information call DLMS:
Mark Shologan 780.699.5082 or
DLMS Purebred Team 780.991.3025

Sale Info

- Enrolled on CAP (Canadian Angus Performance)
- All cattle ROP tested since 1965 (a firm belief for producing superior beef cattle at Crescent Creek)
- All Crescent Creek Cattle are Fully Guaranteed for both soundness and fertility
- Bulls will be semen tested as well as have scrotal measurements (available sale day)
- Delivery can be arranged with Crescent Creek
- Crescent Creek's breeding program has developed many 1/2 and 3/4 brothers (Consistency Counts)
- Actual sale weights will be available sale day.
- Crescent Creek reserves the right to collect semen on any bull.

SPECIAL REPRESENTATIVE

Myles Immerkar, CEO Canadian Angus Association
Bob Toner, Canadian Angus Association
Michelle Potapinski, President SK Angus Association

INSURANCE

Bonnie Thompson, Alameda Agencies - 306-489-2258
cell: 306-489-2053
fax: 306-483-7311

TERMS OF SALE

Cash or cheque at par payable on Sale Day, unless other arrangements have been made prior to sale. Registration papers will be transferred only upon full and final payment. Announcements from the block will take precedence over printed material in the catalog.

PAYMENT TERMS

Females 60% down sale day, 40% October 1, 2020, two cheques sale day.

TERMS & CONDITIONS

All cattle sell under the standard terms and conditions set forth by the Canadian Angus Association. Precautions have been taken to ensure your safety, neither Owners or Management are responsible for any accidents.

Crescent Creek Angus will keep animals until May 1, 2021.

Crescent Creek Angus is not liable for any injuries or death on uninsured bulls
Insurance on animals staying at the farm is encouraged.

ACCOMMODATIONS

Melville Inn, Melville, SK - 306-728-5255
Sigma Inn & Suites, Melville, SK - 306-728-4688
Howard Johnson, Melville, SK - 306-728-4546
Ituna Motor Inn, Ituna, SK - 306-795-2244

BULL VOLUME DISCOUNT

3% on 3 bulls, 4% on 4 bulls, 5% on 5 bulls or more

FEED SPECIALIST

Trouw Nutrition- Jessica Hextall- 204-901-3058

SEMEN EVALUATION/EMBRYO WORK

Ranchland Vet Services, Semen Evaluation 306-482-1010

HERD HEALTH

Melville Vet Clinic 306-728-4456
Animal Health Center of Melville - 306-728-2633

VIDEOS

Chris Moulding - 306-690-9450

PICTURES

Tyler Harris Photography

SALEBOOK

Katie Olynyk Anderson- KatieDidOkay Designs

ASK WES OR WADE ABOUT OUR SIGHT UNSEEN PROGRAM

**\$100 Discount on bull
purchases over \$3000
If taken home
within 7 days of the sale**

Welcome from OBI

I welcome you to the 23rd Annual Crescent Creek Bull & Female Sale. This family run operation has continued to stay ahead in the business with the foundation being the cow herd. The depth of this herd when you go through them in the summer time is simply impressive, a must see for all one day if you haven't seen them yet.

Last year's sale was right in the pandemic times and there was no crowd but the commercial cattleman came before the sale to analyze the cattle offered and the sale was another success, a testament to the quality of the Angus cattle provided to them and the loyal customers they have as well.

This year when travelling through the bull pens, the word consistency was always on the top of mind; deep sided, loose hided, great moving, thick topped and packed full of meat and muscle. Another very uniform set of bulls that the family has to offer this year. There are a few standouts this year as you will see in the catalog and in person. The females offered are right from the heart of the program from the foundation lineage they have built. Study them because they could become your next foundation female.

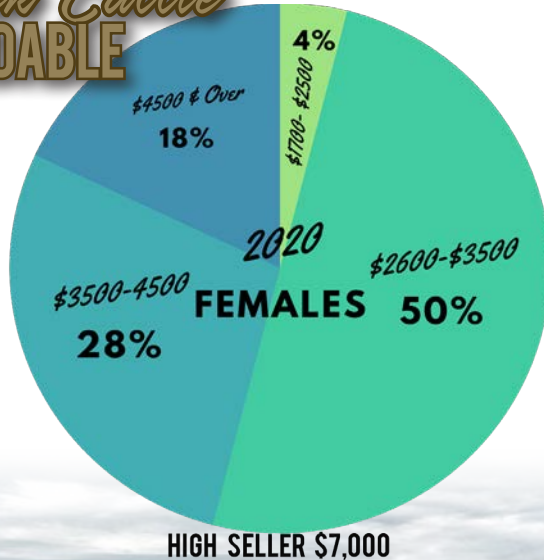
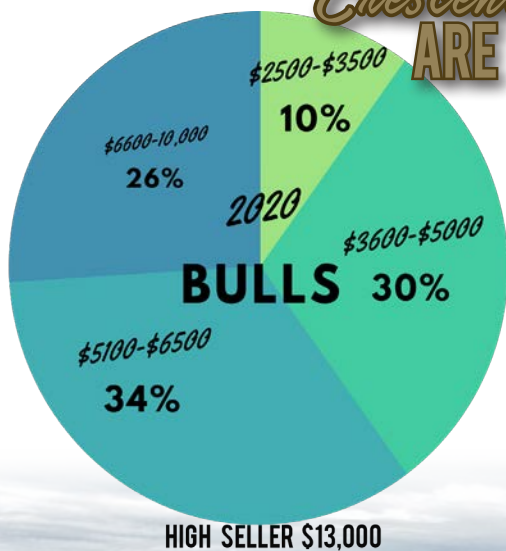
I have been thru the offering and the herd many times and know the cow families; buy with confidence here. If you need any assistance, please do not hesitate to call myself or any of the sales staff.

Mark Holowaychuk, OBI

Video Sale

**ALL BULLS WILL BE PENNED OUTSIDE PRIOR & DURING THE SALE.
CATTLE WILL BE SOLD BY VIDEO. NO CATTLE WILL ENTER THE RING.**

Crescent Creek Cattle
ARE AFFORDABLE



A NOTE ABOUT COVID MEASURES

- With the ever-changing regulations regarding COVID-19 protocol we would like to assure you that every precaution will be taken to adhere to the SHA guidelines presented at the time of the sale.
- Our sale has always been a social function however, this year we are restricted to business only and therefore must follow attendance restrictions
- We have various ways to assist you with your purchases: bid in person, internet online bidding or on the phone with any of our sales representatives.
- We strongly recommend you come and view the bulls prior to sale day. Take advantage of our open house March 20 & 21.

AVERAGE EPDS FOR ALL BLACK ANGUS CALVES BORN IN 2020

| | Birth Weight | Weaning Weight | Yearling Weight | Milk | Calving Ease |
|-----|--------------|----------------|-----------------|------|--------------|
| EPD | +2.1 | +48 | +86 | +22 | +3.5 |

EPDS ARE UPDATED FREQUENTLY BY THE ASSOCIATION AND ARE CURRENT AS OF FEBRUARY 18, 2020
205 & 365 DAY WEIGHTS ARE ADJUSTED WEIGHTS

What do the numbers mean?

For most commercial cattlemen, there are really only four EPDs they need to look at: birth weight (BW); weaning weight (WW); yearling weight (YW); and milk. The others, with perhaps the exception of the carcass traits, are more useful for purebred breeders.

BIRTH WEIGHT - Calf weight at birth adjusted to a mature dam equivalent. Expected progeny difference is reported in pounds. The larger the EPD indicates a heavier average birth weight

WEANING WEIGHT - Calf weight taken between 160 and 250 days of age and adjusted to 205 days of age and a mature dam equivalent. Expected progeny difference is reported in pounds. The larger EPD indicates a heavier average weaning weight for calves sired by that bull.

YEARLING WEIGHT - Weight taken between 330 and 440 days of age and adjusted 365 days of age and a mature dam equivalent. Expected progeny difference is reported in pounds. The larger EPD indicates a heavier average yearling weight for calves sired by that bull

MILK - The milk EPD is a predictor of a sire's genetic merit for milk as expressed in his daughters, or in other words the part of weaning weight attributed to milk genes. The larger EPD indicates heavier average weaning weight due to daughters' greater maternal ability.

CALVING EASE

Bulls have been rated (in our opinion) on calving ease ability

* - recommended on cows

** - moderate birth

*** - indicates calving ease elite

*** Calving Ease

A NOTE ABOUT BIRTH WEIGHTS- ANGUS BULLS HAVE LONG BEEN KNOWN FOR THEIR CALVING EASE. IF YOU ARE BREEDING HEIFERS, ANGUS IS THE GO-TO BREED OF CHOICE. BUT WHERE DO THE "BIG" BIRTH WEIGHT BULLS FIT IN? MATURE COWS SHOULD BE ABLE TO CALVE OUT UP TO 7% OF THEIR BODY WEIGHT UNASSISTED. IT IS RARE FOR MATURE COWS TO REQUIRE ASSISTANCE, EXCEPT FOR ABNORMAL DELIVERIES SUCH AS BACKWARDS OR BREECH DELIVERIES.

EPD'S CAN BE USEFUL BUT CONFUSING TO INTERPRET. IF A BULL HAS A BIRTH WEIGHT EPD OF +5 HIS PROGENY WOULD BE ON AVERAGE 3 LBS HEAVIER THAN BREED AVERAGE (5-2 LBS=3 LBS). HOWEVER THERE ARE MANY OTHER FACTORS THAT CONTRIBUTE TO BIRTH WEIGHTS.

MORAL OF THE STORY: IF YOU ARE BREEDING MATURE COWS TO AN ANGUS BULL, DON'T MAKE BIRTH WEIGHT YOUR FOCUS.

Feeding Program

Our philosophy is to make these young bulls last as long as they can. As we talk to our customer base we think it is working. Many herd bulls lasting multiple years for their owners. We never feed to compromise breeding or structural soundness. As in the past the bulls are hand fed brown oat and protein pellet ration with free choice hay. We strive for a three pound a day gain, and the bulls are fed with this in mind. The bull calves were weaned September 25

The females were weaned October 5 and put on bank grass until mid November, then moved to bale grazing until mid December, at which time they were switched to a brown oat and pellet ration. It is amazing how well these young females did on extended grazing

Actual weaning weights are available upon request.

Herd Health

The vaccination program consisted of Express 5 and blackleg shots. All breeding females & bulls will have had their pre-breeding Express 5 vaccine and blackleg booster prior to the sale. The cattle have had plenty of exercise in large pens, and are very free moving.

Feature Lot



lot
1

CRESCENT CREEK NEXT STEP 4H

Male WOS 4H January 10 2020 2151451

SYDGEN 928 DESTINATION 5420
PRAIRIE PRIDE NEXT STEP 2036
FLYING V MISS PRIDE 426

CAR NEXT STEP 889

LAR WINDY 64 423S
CAR MISS SUSIE 060
CAR SUSIE 101

CHAPMAN MEMENTO 0505X
CHAPMAN MEMENTO 3589A
CHAPMAN KAWICH LADY 8065U

CRESCENT CREEK ROSEBUD 163D

SILVER DOME DYNASTY 19T
CRESCENT CREEK ROSEBUD 66Y
CRESCENT CREEK ROSEBUD 30T

| | |
|--------|------|
| BW | 85 |
| WW | 734 |
| YW | 1419 |
| CE | *** |
| B EPD | 2.1 |
| W EPD | 58 |
| Y EPD | 107 |
| Milk | 29 |
| CE EPD | 6 |



Maternal Grand Sire

1/2 Interest, Possession Negotiable
& We Would Like to Winter the Bull

The old adage "A picture is worth a thousand words" may never have been more correct than with this bull. This young fellow has presence like no other. 4H was a standout from day one right through sale day. The Memento daughters have consistently raised the top calves here. With some fresh genetics this young bull may very well be the "Next Step" for many breeding programs.



Grand Sire of Lot 1 & 2

As his name entails "889" may very well be the next step in carrying our program forward. His first calf crop will go a long way to securing his future. Every true seedstock producer is always looking for the next piece of the program. When we saw what maternal power the "Next Step" bull possessed it caught our attention. When we found one in the Connelly program he needed to be aquired. We had great success with other bulls from this no nonsense program, that built their whole herd around longevity and production.

lot
2

CRESCENT CREEK NEXT STEP 9H

Male WOS 9H January 12 2020 2151460

SYDGEN 928 DESTINATION 5420
PRAIRIE PRIDE NEXT STEP 2036
FLYING V MISS PRIDE 426

CAR NEXT STEP 889

LAR WINDY 64 423S
CAR MISS SUSIE 060
CAR SUSIE 101

CHAPMAN MEMENTO 0505X
CHAPMAN MEMENTO 3589A
CHAPMAN KAWICH LADY 8065U

CRESCENT CREEK PEARL 57F

S A V IRON MOUNTAIN 8066
WILLOWVIEW PEARL 9A
WILLOWVIEW PEARL 14R

| | |
|--------|------|
| BW | 70 |
| WW | 734 |
| YW | 1229 |
| CE | *** |
| B EPD | 1.5 |
| W EPD | 62 |
| Y EPD | 102 |
| Milk | 29 |
| CE EPD | 5 |

9H follows very close in type as his lead off brother. The dam's mother has consistently produced excellent progeny. Note the Memento 3589 sired dam. These cows will write their own chapter of production here.



Lot 2



CRESCENT CREEK ALTERNATIVE 54F

Male WOS 54F January 23 2018 2041023

SITZ ALLIANCE 659S
CRESCENT CREEK ALLIANCE 29N
KBJ MISS COMPRESS 862K

CRESCENT CREEK ALTERNATIVE 516

B S S LIMITED DESIGN
CRESCENT CREEK LASSIE 48N
CRESCENT CREEK LASSIE 33H

O C C EMBLAZON 854E
B C C-J C L EMBLAZON 038-287
B C C 1531 ELDORNE 826-038

CRESCENT CREEK QUEEN RUTH 67Y

MINBURN MAIN EVENT 82R
CRESCENT CREEK QUEEN RUTH 56T
CRESCENT CREEK QUEEN RUTH 66M

| | |
|--------|-----|
| BW | 98 |
| WW | 870 |
| YW | 110 |
| B EPD | 6.4 |
| W EPD | 67 |
| Y EPD | 110 |
| Milk | 27 |
| CE EPD | -6 |



| | | | |
|---------|--------|---------|----------|
| Calves | Avg BW | Adj 205 | Adj 365 |
| Males | 91 lbs | 701 lbs | 1282 lbs |
| Females | 83 lbs | 639 lbs | 850 lbs |

54F WAS A SALE TOPPER IN OUR 2019 SALE TO PINE GROVE ANGUS. WE PURCHASED A 1/2 INTEREST BACK IN THE BULL AS WE FELT IT WAS VERY IMPORTANT TO CONTINUE THE INFLUENCE OF HIS QUEEN RUTH 67Y DAM. TO DATE WE HAVE 3 WALKING SONS OFF TIS COW IN OUR BULL INVENTORY. WOS 121D, WOS 54F, AND WOS 115H. GREAT COWS PRODUCE GREAT THINGS! THIS SIRE GROUP IS VERY UNIFORM AND WILL ADD POUNDS TO YOUR BOTTOM LINE AS WELL AS SOME OF THE BEST MATERNAL POWER.

lot
3

CRESCENT CREEK REPLICA 44H

Male WOS 44H January 22 2020 2152520

CRESCENT CREEK ALTERNATIVE 54F

MC CUMBER 8R101 RITO 1136
CRESCENT CREEK ENTREPRENEUR105A
CRESCENT CREEK HEROINE 119U

CRESCENT CREEK NEONIA 67D

CRESCENT CREEK PACESETTER 16U
CRESCENT CREEK NEONIA 81Z
PARKWOOD EPPONIA 20X

| | |
|--------|------|
| BW | 90 |
| WW | 753 |
| YW | 1330 |
| CE | * |
| B EPD | 4.6 |
| W EPD | 62 |
| Y EPD | 94 |
| Milk | 24 |
| CE EPD | -4 |

A big framed, big performance bull. This bull is packed with muscle, a perfect foot to carry him for a lot of years, and a big crest to make you stop and look. Top 10% in weaning weight this bull will pack the pounds on those calves and add to your bottom line.





lot
4

CRESCENT CREEK ALLY 59H

Male WOS 59H January 26 2020 2154246

S CHISUM 6175
S CHISUM 0206
S VANNA 358

CRESCENT CREEK ROSEBUD 23D

RR SCOTCHMAN 2999
CRESCENT CREEK ROSEBUD 205T
CRESCENT CREEK ROSEBUD 38K

CRESCENT CREEK ALTERNATIVE 54F

This bull is a maternal brother to a bull that sold last year to Fred Lansdell. This bull comes highly recommended if maternal strength is your goal. He stems from the two most maternal families at Crescent Creek.

| | |
|--------|------|
| BW | 92 |
| WW | 731 |
| YW | 1293 |
| CE | * |
| B EPD | 4.7 |
| W EPD | 61 |
| Y EPD | 95 |
| Milk | 24 |
| CE EPD | -4 |



Feature Lot



lot
5

CRESCENT CREEK ECLIPSE 89H

Male WOS 89H February 01 2020 2158174

CRESCENT CREEK ALTERNATIVE 54F

O C C PAXTON 730P
COLEMAN CHARLO 0256
BOHI ABIGALE 6014

CRESCENT CREEK ROSEBUD 83D

CRESCENT CREEK PACESETTER 16U
CRESCENT CREEK ROSEBUD 124X
CRESCENT CREEK ROSEBUD 86U

| | |
|--------|------|
| BW | 86 |
| WW | 733 |
| YW | 1248 |
| CE | ** |
| B EPD | 2.1 |
| W EPD | 54 |
| Y EPD | 83 |
| Milk | 25 |
| CE EPD | 4 |

This bull is one you will look twice at. Packed with muscle, perfect foot, and style that will catch your eye. This bull is functional from front to back and is impressive as they come when he gets out on the move. Backed by some of the best cows' lines to ever walk at Crescent Creek, the Rosebuds, Queen Ruth's, and of course the famous Lassie. 83D is the dam of the pick of the heifer calves Masterpiece lot that sold in 2019 to Dan Petherbridge. With Coleman Charlo in his background you know this bull will produce nothing but the good ones.



Longevity is in this bull's genes!

lot
6**CRESCENT CREEK RECOIL 93H**

Male WOS 93H February 02 2020 2158177

CRESCENT CREEK ALTERNATIVE 54F

CHAPMAN MEMENTO 0505X
CHAPMAN MEMENTO 3589A
CHAPMAN KAWICH LADY 8065U

CRESCENT CREEK LASSIE 31D

SILVER DOME DYNASTY 19T
CRESCENT CREEK LASSIE 65Y
CRESCENT CREEK LASSIE 132T

The biggest 54F framed bull on offer but gives nothing up. consistent with his pen mates this bull will make you stop and look, packed with muscle, big foot, and correct make up. Backed with top 15% and 20% in weaning weight and yearling weight, this guy is the whole package. This guy is a 5 star pick!

| | |
|--------|------|
| BW | 100 |
| WW | 785 |
| YW | 1388 |
| CE | * |
| B EPD | 5.9 |
| W EPD | 60 |
| Y EPD | 100 |
| Milk | 29 |
| CE EPD | -6 |

lot
7**CRESCENT CREEK ALTERNATIVE 6H**

Male WOS 6H January 12 2020 2151543

CRESCENT CREEK ALTERNATIVE 54F

A A R T E N X 7008 S A
B A T E N X 2018
B A B L A C K B I R D 5918

SFL CRUSH MAID 664

GEIS MAXIMUM 80'01
D R Y L A N D C R U S H M A I D 587
B T C R U S H M A I D 389E

Long made, good footed 54F son out of the crush-maid daughter. Top 25% in weaning weight with a smooth and correct make up, don't sleep on this guy.

| | |
|--------|------|
| BW | 86 |
| WW | 687 |
| YW | 1176 |
| CE | ** |
| B EPD | 4.2 |
| W EPD | 56 |
| Y EPD | 90 |
| Milk | 27 |
| CE EPD | -2 |

lot
8**CRESCENT CREEK BIG TIME 79H**

Male WOS 79H January 29 2020 2186327

CRESCENT CREEK ALTERNATIVE 54F

SINCLAIR ENTREPRENEUR 8R101
M C C U M B E R 8R101 R I T O 1136
M I S S W I X 7176 O F M C C U M B E R

CRESCENT CREEK ERICA 39D

C A R I D E A L 061
C R E S C E N T C R E E K E R I C A 46T
H I L O W E R I C A 32D

The great thing about these 54F sire group is no matter which one you like they all will add to the bottom line. Add to those yearling weights and to the make of their calves, these guys are money makers. I believe it speaks volumes to have such quality set of bulls of a home raised bull. 79H is another bull that fits the bill of his pen mates.

| | |
|--------|------|
| BW | 108 |
| WW | 724 |
| YW | 1320 |
| CE | * |
| B EPD | 7.5 |
| W EPD | 57 |
| Y EPD | 97 |
| Milk | 24 |
| CE EPD | -11 |

lot
9**CRESCENT CREEK ALLIANCE 115H**

Male WOS 115H February 10 2020 2161519

CRESCENT CREEK ALTERNATIVE 54F

W A N D E R I N G C R K D Y N A S T Y J R M 2F
S I L V E R D O M E D Y N A S T Y 19T
S I L V E R D O M E O A K L E A F 119L

CRESCENT CREEK LASSIE 65Y

C A R I D E A L 061
C R E S C E N T C R E E K L A S S I E 132T
C R E S C E N T C R E E K L A S S I E 33H

I could write on and on about another 54F bull, but you'd just be better off coming to check this guy out. Fits right in with one of the most impressive and uniform sire groups to date.

| | |
|--------|------|
| BW | 86 |
| WW | 706 |
| YW | 1221 |
| CE | ** |
| B EPD | 3.8 |
| W EPD | 46 |
| Y EPD | 70 |
| Milk | 26 |
| CE EPD | -2 |



lot
REF

CRESCENT CREEK ALTERNATIVE 516

Male WOS 16C January 25 2015 1887604

SITZ TRAVELER 8180
SITZ ALLIANCE 6595
SITZ BARBARAMERE JET 2698
Sire: CRESCENT CREEK ALLIANCE 29N
GDAR RUSS 896
KBJ MISS COMPRESS 862K
EVERBLACK MISS COMPRESS 98G

SVF GDAR 216 LTD
B S S LIMITED DESIGN DDF
B/R RUBY OF TIFFANY 5113 DDF
Dam: CRESCENT CREEK LASSIE 48N
DWAJO CHIEF 92E
CRESCENT CREEK LASSIE 33H
CRESCENT CREEK PROUD LASSIE 70

| | |
|------|--------|
| BW | 96 lbs |
| WW | 910 |
| YW | 1320 |
| BEPD | +1.2 |
| WEPD | +39 |
| YEPD | +73 |
| Milk | +32 |
| TM | +52 |



| | | | |
|---------|--------|---------|----------|
| Calves | Avg BW | Adj 205 | Adj 365 |
| Males | 84 lbs | 684 lbs | 1207 lbs |
| Females | 81 lbs | 640 lbs | 847 lbs |

WITH EACH NEW CALF CROP ON THE GROUND THE IMPORTANCE OF THIS HOME RAISED BULL BECOMES MORE APPARENT. WE TAKE MUCH PRIDE IN RAISING A BULL THAT WILL INFLUENCE EVERY HERD THAT HIS GENETICS ARE INTRODUCED TO. THE MATERNAL POWER OF THIS BULL IS OUTSTANDING AS ALLIANCE '6595' HAS BEEN A BREED LEADER IN MATERNAL TRAITS, AS MANY PRESENT DAY GENETIC LEADERS STEM BACK TO HIM. HIS SONS ARE FULL OF MUSCLE AND MEAT WITH LARGE TESTICLES AND SUPER DISPOSITIONS. HIS DAUGHTERS ARE TRUE GEMS IN OUR HERD. ONCE AGAIN A WALKING BULL THAT POSSES THE ABILITY TO TRULY CHANGE ANY PROGRAM.

OWNED WITH NIELSON LAND AND CATTLE & DIAMOND T CATTLE CO.

lot
10

CRESCENT CREEK 516 11H

Male DOS 11H January 12 2020 2151471

CRESCENT CREEK ALTERNATIVE 516

O C C EMBLAZON 854E
B C C J C L EMBLAZON 038-287
B C C 1531 ELDORENE 826-038
CRESCENT CREEK NANCE 44T
MINBURN MAIN EVENT 50M
KBJ BLACK NANCE 608R
KBJ BLACK NANCE 851H

| | |
|--------|------|
| BW | 98 |
| WW | 721 |
| YW | 1324 |
| CE | * |
| B EPD | 3 |
| W EPD | 51 |
| Y EPD | 91 |
| Milk | 26 |
| CE EPD | 0 |



Lot 10

When the photographer says "wow" when a bull walks into the pen, you know he's good. Let alone the Lassie cow family in his pedigree the Nance 44T has been a patriarch at Crescent Creek for the last 15 years. She hit it out of the park again with this one, great feet, long made, and packed with muscle. With longevity in his corner, this guy is more than a sound investment.

lot
11

CRESCENT CREEK 516 30H

Male WOS 30H January 18 2020 2152511

CRESCENT CREEK ALTERNATIVE 516

STEVENSON BRUNO 561G
BEVERLY HILLS FANDANGO 404
H A RITO LADY 1262

CRESCENT CREEK HEROINE 44W

RON'S STEMWINDER 74J
CRESCENT CREEK LADY BATE 111L
CRESCENT CREEK LADY BATE 8H

| | |
|--------|------|
| BW | 82 |
| WW | 683 |
| YW | 1219 |
| CE | *** |
| B EPD | 1.7 |
| W EPD | 40 |
| Y EPD | 67 |
| Milk | 28 |
| CE EPD | 4 |

One of the most powerful calving ease bulls on offer.
Highly maternal, with eye appeal and performance.



*** Calving Ease

lot
12

CRESCENT CREEK 516 10H

Male WOS 10H January 12 2020 2151462

CRESCENT CREEK ALTERNATIVE 516

N BAR EMULATION EXT
O C C GREAT PLAINS 943G
DIXIE ERICA OF C H 1019

GDAR JOAN 9175

WOODHILL COMBO 344-626
RA JOAN J6
R A 521 JOAN G162

| | |
|--------|------|
| BW | 80 |
| WW | 673 |
| YW | 1297 |
| CE | *** |
| B EPD | 0.7 |
| W EPD | 45 |
| Y EPD | 82 |
| Milk | 32 |
| CE EPD | 6 |



*** Calving Ease

Real smooth and correct made alternative bull out of the original 16C bull who left a tremendous set of bull's year in and year out. The same could be said for this guy. Out of the original Joan cow that still is in production here and has made a lot of friends over the years here with her bull and female production. You will see the impact she has had in him and later on in the sale offering.

lot
13

CRESCENT CREEK 516 15H

Male WOS 15H January 13 2020 2151465

CRESCENT CREEK ALTERNATIVE 516

DWAJO CHIEF 92E
CRESCENT CREEK CHIEF 80G
CRESCENT CREEK QUEEN RUTH 64D

CRESCENT CREEK ROSEBUD 85X

RR SCOTCHMAN 2999
CRESCENT CREEK ROSEBUD 133R
CRESCENT CREEK HEROINE 076N

| | |
|--------|------|
| BW | 98 |
| WW | 724 |
| YW | 1172 |
| CE | * |
| B EPD | 4.2 |
| W EPD | 49 |
| Y EPD | 76 |
| Milk | 32 |
| CE EPD | -6 |



Lot 13

Smooth, thick, and with the typical big foot of the 516 bulls. With backing by the Crescent Creek greats of Rosebuds, Queen Ruths, and the Lassie. Maternal Traits run deep in this guy.

lot
14

CRESCENT CREEK 516 16H

Male WOS 16H January 16 2020 2151466

CRESCENT CREEK ALTERNATIVE 516

LOOKOUT PACESETTER 258M
CRESCENT CREEK PACESETTER 16U
CRESCENT CREEK STUMPIE 9R

CRESCENT CREEK QUEEN RUTH 40B

RR SCOTCHMAN 2999
CRESCENT CREEK QUEEN RUTH 155T
CRESCENT CREEK QUEEN RUTH 02J

Moderate framed bull with some extra length. You can appreciate this bull when he gets out and travels with such length. Stamped with the 516 traits this bull will grab your eye in the pen. With extra length he surely doesn't give any middle up. Make note to see this guy sale day.

| | |
|--------|------|
| BW | 80 |
| WW | 631 |
| YW | 1207 |
| CE | *** |
| B EPD | 0.8 |
| W EPD | 42 |
| Y EPD | 73 |
| Milk | 25 |
| CE EPD | 6 |



Lot 14

*** Calving Ease

lot
15

CRESCENT CREEK 516 19H

Male WOS 19H January 14 2020 2151468

CRESCENT CREEK ALTERNATIVE 516

WANDERING CRK DYNASTY JRM 2F
SILVER DOME DYNASTY 19T
SILVER DOME OAKLEAF 119L

CRESCENT CREEK ROSEBUD 66Y

B C C-J C L EMBLAZON 038-287
CRESCENT CREEK ROSEBUD 30T
CRESCENT CREEK ROSEBUD 7R

Nice frame size with extra mass. Identical to his pen mates he gets out and travels and is complete while doing it. Extremely deep in his middle and carries a nice depth of quarter, he has herd bull written all over him.

| | |
|--------|------|
| BW | 100 |
| WW | 700 |
| YW | 1194 |
| CE | * |
| B EPD | 4.6 |
| W EPD | 42 |
| Y EPD | 70 |
| Milk | 27 |
| CE EPD | -4 |



Lot 15

lot
16

CRESCENT CREEK 516 21H

Male WOS 21H January 15 2020 2151469

CRESCENT CREEK ALTERNATIVE 516

WANDERING CRK DYNASTY JRM 2F
SILVER DOME DYNASTY 19T
SILVER DOME OAKLEAF 119L

CRESCENT CREEK BARESS 82X

LOOKOUT PACESETTER 258M
CRESCENT CREEK BARESS 6T
SUNNY GROVE BARESS 7M

The muscle and depth of muscle in this bull's quarter will make you look twice. A moderate frame bull that is PACKED with muscle. When he gets out on the move, he doesn't give up a thing. This guy will be a 5 star candidate in your book backed by the great Baress cow family.

| | |
|--------|------|
| BW | 98 |
| WW | 600 |
| YW | 1159 |
| CE | * |
| B EPD | 4.3 |
| W EPD | 35 |
| Y EPD | 63 |
| Milk | 27 |
| CE EPD | -4 |



Lot 16

lot
17

CRESCENT CREEK 516 31H

Male WOS 31H January 18 2020 2187120

CRESCENT CREEK ALTERNATIVE 516

SINCLAIR ENTREPRENEUR 8R101
MC CUMBER 8R101 RITO 1136
MISS WIX 7176 OF MC CUMBER

CRESCENT CREEK ERROLLINE 93B

SILVER DOME DYNASTY 19T
CRESCENT CREEK ERROLLINE 184X
CRESCENT CREEK ERROLLINE 52S

| | |
|--------|------|
| BW | 102 |
| WW | 730 |
| YW | 1251 |
| CE | * |
| B EPD | 4.2 |
| W EPD | 48 |
| Y EPD | 80 |
| Milk | 29 |
| CE EPD | -3 |

Take note of this bull. He could be a potential sleeper in the sale as he is half brother to the sale topping bull last year that went to Midland Cattle co. Another stout 516 bull that checks off all the boxes for your next herd bull.



lot
18

CRESCENT CREEK 516 23H

Male WOS 23H January 16 2020 2152507

CRESCENT CREEK ALTERNATIVE 516

SITZ WISDOM 481T
KG WISDOM 1419
DJ ERISKAY S014 NHF

CRESCENT CREEK ROSEBUD 113B

CRESCENT CREEK PACESETTER 16U
CRESCENT CREEK ROSEBUD 80Z
CRESCENT CREEK ROSEBUD 87X

| | |
|--------|------|
| BW | 97 |
| WW | 700 |
| YW | 1302 |
| CE | * |
| B EPD | 3.8 |
| W EPD | 53 |
| Y EPD | 93 |
| Milk | 29 |
| CE EPD | -1 |

Real moderate bull with a clean front and a herd sire look. The 516 traits run with the bull and he has that "presence" in the pen. Looking at all the 516 bulls at once might make your list of ones to pick a bit longer, and your time in the pen a bit longer.



lot
19

CRESCENT CREEK 516 43H

Male WOS 43H January 21 2020 2152519

CRESCENT CREEK ALTERNATIVE 516

WANDERING CRK DYNASTY JRM 2F
SILVER DOME DYNASTY 19T
SILVER DOME OAKLEAF 119L

CRESCENT CREEK ROSEBUD 87X

GDAR FRONTLINE 261
CRESCENT CREEK ROSEBUD 144R
CRESCENT CREEK ROSEBUD 42M

| | |
|--------|------|
| BW | 92 |
| WW | 625 |
| YW | 1227 |
| CE | * |
| B EPD | 3.7 |
| W EPD | 37 |
| Y EPD | 70 |
| Milk | 29 |
| CE EPD | 0 |



I cannot talk about this bull enough. He is as wide as he is tall and it is something to see a bull of such moderate frame to be as hard muscling and have the herd bull presence as this bull. When you see him on the move you get excited about how this bull will fill out down the road. A 5 star bull in our eyes. Note the Rosebud "X" cow putting in the work that builds herds.



HA OUTSIDE 5161

MALE IMP 5161C FEBRUARY 24 2015 1950587

MOGCK SURE SHOT
KG SOLUTION 0018
KG RITO LADY 8724L

Sire: HA OUTSIDE 3008

S A V BISMARCK 5682
HA EVER LADY 1575
HA EVER LADY 8066

H A R B WINDY 702 J H
APEX WINDY 078
APEXETTE LUCY 6037

Dam: HA BLACKCAP LADY 2338

PAPA FORTE 1921
H A BLACKCAP LADY 1055
H A RITO BLACKCAP 9038

| | |
|------|------|
| BW | 92 |
| WW | 665 |
| YW | 1302 |
| BEPD | +0.6 |
| WEPD | +42 |
| YEPD | +70 |
| Milk | +33 |
| TM | +54 |



| | | | |
|---------|--------|---------|----------|
| Calves | Avg BW | Adj 205 | Adj 365 |
| Males | 85 lbs | 692 lbs | 1222 lbs |
| Females | 78 lbs | 619 lbs | 854 lbs |

5161'S MILKING FEMALES ARE WHAT WE BELIEVE TO BE THE NEXT GREAT SET OF BROOD COWS HERE. "5161" HAS BECOME THE TRUE ANCHOR TO OUR PROGRAM. ONE CANNOT ASK FOR MORE THAN THIS BULL HAS DONE FOR OUR PROGRAM. HE IS HERE FOR THE LONG RUN. CO-OWNED WITH SHEIDGHAN ANGHUS

lot
20

CRESCENT CREEK 5161 102H

Male WMO 102H February 04 2020 2158185

HA OUTSIDE 5161

FIGURE 8 ANGUS TOM BOY 509R
LOOKOUT HUCK 53T
LOOKOUT EDNA 145L

CRESCENT CREEK DUCHESS 63W

CAR IDEAL 061
CRESCENT CREEK DUCHESS 18T
CRESCENT CREEK DUCHESS 51M

| | |
|--------|------|
| BW | 88 |
| WW | 735 |
| YW | 1297 |
| CE | ** |
| B EPD | 2.5 |
| W EPD | 52 |
| Y EPD | 85 |
| Milk | 25 |
| CE EPD | 3 |



Sale Feature

Lot 20

This bull should be no surprise to anyone on why he is one of the top ones in the sale. The consistency of the Outside cattle is unmatched by none. Year after year the Outside bulls are flat out good and top of everyone's list for a reason. Packed with muscle, excellent foot, and moderate frame, they go into any operation and work. The same can be said about this bull. Out of a W cow who has shown no sign of slowing down. This mating should peak your interest in consistency and longevity.

lot
21

CRESCENT CREEK IMPRESSIVE 8H

Male WOS 8H January 12 2020 2151457

HA OUTSIDE 5161

MINBURN MAIN EVENT 71N
MINBURN MAIN EVENT 82R
MINBURN JOY 34L

CRESCENT CREEK QUEEN RUTH 56T

CRESCENT CREEK REVIVAL 06J
CRESCENT CREEK QUEEN RUTH 66M
TRAILVIEW EMPIRE PRIDE 127'96

| | |
|--------|------|
| BW | 82 |
| WW | 700 |
| YW | 1247 |
| CE | ** |
| B EPD | 3 |
| W EPD | 51 |
| Y EPD | 78 |
| Milk | 28 |
| CE EPD | 0 |



Sale Feature

Lot 21

Impressive is exactly what this guy is. An absolute spitting image of 5161 as they come. Huge top, perfect foot, and packed front to back with muscle. Needing a herd bull or not he is something to see in person. We see him every day and still can't get enough of him. Once again another "T" cow here producing. Longevity is the trait that pays and we feel it speaks volumes to have cows of such age in the herd. Maternal power in this one!

lot
22**CRESCENT CREEK OUTSIDE 27H**

Male WOS 27H January 18 2020 2152729

HA OUTSIDE 5161

E X A R SCOTCH CAP 816
RR SCOTCHMAN 2999
ERICA LASSIE OF R R 8464

CRESCENT CREEK ROSEBUD 15A

RITO 616 OF 4B20 6807
CRESCENT CREEK ROSEBUD 24L
CRESCENT CREEK ROSEBUD 134G

Another Outside bull stamped with consistency. Real nice spread on with a birthweight of 76 and weaning weight of 840. Note him to be a heifer bull candidate and mark a few stars by him.

| | |
|--------|------|
| BW | 76 |
| WW | 840 |
| YW | 1208 |
| CE | *** |
| B EPD | -0.7 |
| W EPD | 46 |
| Y EPD | 74 |
| Milk | 28 |
| CE EPD | 8 |



Lot 22

lot
23**CRESCENT CREEK SOLUTION 86H**

Male WMO 86H February 01 2020 2154238

HA OUTSIDE 5161

LOOKOUT PACESETTER 258M
CRESCENT CREEK PACESETTER 16U
CRESCENT CREEK STUMPIE 9R

CRESCENT CREEK EULA 22X

CAR IDEAL 061
CRESCENT CREEK EULA 190T
CRESCENT CREEK EULA 94L

| | |
|--------|------|
| BW | 82 |
| WW | 630 |
| YW | 1083 |
| CE | *** |
| B EPD | 0.3 |
| W EPD | 37 |
| Y EPD | 55 |
| Milk | 25 |
| CE EPD | 6 |



Lot 23

This guy might be out of one of the best cows to walk the farm over the last few years. 22X has done nothing but produce and produce the good ones. His grandmother 190T combined with his mother 22X have had over 70 embryos collected in the last year. With him being a heifer bull candidate he has major upside in maternal power, fertility, and longevity. The Eula cow family has been working at Crescent Creek for over 60 years. A lot to like in this bull.

lot
24**CRESCENT CREEK OUTSIDE 28H**

Male WMO 28H January 18 2020 2154222

HA OUTSIDE 5161

RITO 707 OF IDEAL 3407 7075
S A V 707 RITO 9969
BR POLLY 8077-472

BAR B ROYAL PRIDE 12A

BAR B TOP HAND 17S
BAR B ROYAL PRIDE 32U
BAR B ROYAL PRIDE 7K

| | |
|--------|------|
| BW | 77 |
| WW | 575 |
| YW | 1152 |
| CE | *** |
| B EPD | 1.5 |
| W EPD | 36 |
| Y EPD | 69 |
| Milk | 23 |
| CE EPD | 4 |

An Outside calf out of a consistent and well made Pride cow. This is a real neat make up of a bull. He is moderate but is as wide as he is tall. Consistent with his half brothers this guy is sure to catch your attention sale day.



Lot 24

lot
25

CRESCENT CREEK OUTSIDE 36H

Male WMO 36H January 20 2020 2154226

HA OUTSIDE 5161

WILLABAR AMBUSH 45G
LOOKOUT PACESETTER 258M
GRASSY LANES MILLY 29U

MINBURN ELLEN ERICA 52X

SOO LINE YELLOWSTONE 237P
MINBURN ELLEN ERICA 191T
MINBURN ELLEN ERICA 131N

Another Outside stamped with that consistent pattern. Note another X cow producing the good ones. 52X sired by the great Pascetter 258M bull. With a great foot and built in muscle, this bull can go cover ground in the spring worry free.

| | |
|--------|------|
| BW | 88 |
| WW | 670 |
| YW | 1113 |
| CE | ** |
| B EPD | 1.8 |
| W EPD | 40 |
| Y EPD | 58 |
| Milk | 27 |
| CE EPD | 3 |



lot
26

CRESCENT CREEK HIGH SIDE 38H

Male ET WOS 38H January 20 2020 2177830

HA OUTSIDE 5161

E X A R SCOTCH CAP 816
RR SCOTCHMAN 2999
ERICA LASSIE OF R R 8464

CRESCENT CREEK ROSEBUD 101T

GDAR QUANTUM 963
CRESCENT CREEK ROSEBUD 70M
CRESCENT CREEK ROSEBUD 38K

| | |
|--------|------|
| BW | 84 |
| WW | 711 |
| YW | 1246 |
| CE | *** |
| B EPD | 2.2 |
| W EPD | 45 |
| Y EPD | 80 |
| Milk | 28 |
| CE EPD | 4.0 |



One of dad's favorite outside bulls. Stamped with the familiar 5161 traits with a extra shot of hair. The 101T cow has been another long serving mother to run the pastures in Goodeve. A donor cow now she has contributed with out breaking a sweat. This bull has a real look to him, one you'd only understand seeing him move through the pen. Many bulls off of "T" females this year in the bull pen, cannot overlook the fantastic mothers behind these herd bulls.

lot
27

CRESCENT CREEK OUT SIDE 49H

Male WOS 49H January 23 2020 2152523

HA OUTSIDE 5161

WANDERING CRK DYNASTY JRM 2F D
SILVER DOME DYNASTY 19T
SILVER DOME OAKLEAF 119L

CRESCENT CREEK BARANDA 95X

RR SCOTCHMAN 2999
CRESCENT CREEK BARANDA 212T
CRESCENT CREEK BARANDA 2J

| | |
|--------|------|
| BW | 95 |
| WW | 670 |
| YW | 1151 |
| CE | * |
| B EPD | 3 |
| W EPD | 43 |
| Y EPD | 72 |
| Milk | 28 |
| CE EPD | 0 |



Big bull with a herd bull written all over him. Goes back to the great Baranda cow family that never seems to miss the beat. His mother a "X" looks like she is 3 not 13.

lot
28**CRESCENT CREEK OUTSIDE 57H**

Male WOS 57H January 25 2020 2187121

HA OUTSIDE 5161

G D A R QUANTUM 1245

C H QUANTUM 3330

DIXIE ERICA OF C H 6180

DOUBLE D MISS MARION 15R

G D A R ROLLS ROYCE 203

DOUBLE D MISS MARION 12N

ALLEN CROFT MISS MARION 09 41E

| | |
|--------|------|
| BW | 70 |
| WW | 655 |
| YW | 1275 |
| CE | *** |
| B EPD | -0.6 |
| W EPD | 42 |
| Y EPD | 77 |
| Milk | 26 |
| CE EPD | 11 |



A heifer bull candidate out a "R" cow, that's right "R". Moderate frame bull with a good muscle definition and longevity-built in. 15R once again calved first cycle and shows no signs of ever stopping, truly something to see. A real neat pedigree here with an excellent make up of 5161- and 16-year-old mother, almost as old as dad's reading glasses. Take note here!

lot
29**CRESCENT CREEK MUSCLEMAN 94H**

Male WOS 94H February 03 2020 2158178

HA OUTSIDE 5161

SINCLAIR ENTREPRENEUR 8R101

MC CUMBER 8R101 RITO 1136

MISS WIX 7176 OF MC CUMBER

CRESCENT CREEK BLACKBIRD 82A

B C LOOKOUT 7024

CRESCENT CREEK ROSEBUD 43W

CRESCENT CREEK ROSEBUD 24L

| | |
|--------|------|
| BW | 86 |
| WW | 675 |
| YW | 1162 |
| CE | *** |
| B EPD | 0.4 |
| W EPD | 40 |
| Y EPD | 60 |
| Milk | 26 |
| CE EPD | 6 |



Maybe the most moderate bull in the sale but he might be the most muscular. Every day I see him I just can't get over this powerhouse on legs. A real appealing 86lb birth weight he is a heifer bull candidate with some real shape adding to his calves. He is a maternal brother to our Foreman 25E bull used with great success in our heifer pen. Note the misprint, 82A is from the elite Rosebud cow family not Blackbird.

lot
30**CRESCENT CREEK OUTSIDE 109H**

Male WOS 109H February 07 2020 2161514

HA OUTSIDE 5161

LOOKOUT PACESETTER 258M

CRESCENT CREEK PACESETTER 16U

CRESCENT CREEK STUMPIE 9R

CRESCENT CREEK DUCHESS 179A

CRESCENT CREEK ALLIANCE 29N

CRESCENT CREEK DUCHESS 81R

CRESCENT CREEK DUCHESS 51M

| | |
|--------|------|
| BW | 81 |
| WW | 670 |
| YW | 1226 |
| CE | *** |
| B EPD | 0.2 |
| W EPD | 42 |
| Y EPD | 68 |
| Milk | 25 |
| CE EPD | 8 |



An appealing birth EPD on this real appealingly made 5161 bull. From dad's favorite cow, she really did her work with this one. Gets out and moves freely and great foot placement. A long-made bull that you will find in the pen.

lot
31

CRESCENT CREEK OUT RIDER 118H

Male WOS 118H February 11 2020 2161520

HA OUTSIDE 5161

O C C EMBLAZON 854E
B C C-J C L EMBLAZON 038-287
B C C 1531 ELDORENE 826-038

CRESCENT CREEK QUEEN RUTH 67Y

MINBURN MAIN EVENT 82R
CRESCENT CREEK QUEEN RUTH 56T
CRESCENT CREEK QUEEN RUTH 66M

| | |
|--------|------|
| BW | 85 |
| WW | 640 |
| YW | 1244 |
| CE | ** |
| B EPD | 3.4 |
| W EPD | 45 |
| Y EPD | 77 |
| Milk | 26 |
| CE EPD | 0 |



The rising star of the 5161 pen over the last month. Out of a Elite dam 67Y who has no sign of slowing down. Note the 56T in the pedigree, mother of the standout 8H bull. We feel these cows and cow families speak volumes of the quality of bulls we will have on offer this year.

lot
32

CRESCENT CREEK OUTSIDE 126H

Male WOS 126H February 14 2020 2161524

HA OUTSIDE 5161

S CHISUM 6175
S CHISUM 0206
S VANNA 358

BAR D K LAWN 81'14

MYTTY IN FOCUS
BAR D K LAWN 8'08
BAR DK LAWN 30'06

| | |
|--------|------|
| BW | 80 |
| WW | 640 |
| YW | 1174 |
| CE | *** |
| B EPD | 0.5 |
| W EPD | 41 |
| Y EPD | 68 |
| Milk | 28 |
| CE EPD | 6 |



A real neat bull here. Another bull you can tell is a 5161 from across the pen. Packed with muscle, shape, and length with a foot that is impressive to see. This bull could fit in anywhere in the this sire group but someone has to be last but no fault to him. Big quarter and big future for this guy.







Keep an Eye on Everything Important.

Corral Cameras - Barn Cameras - Stationary and PTZ

Steven & Petrunia Olson

306-876-4961
306-621-6723
info@vipertechgroup.com





MACNAB SCOTCHMAN 379E

Male CSM 379E March 16 2017 1956423

E X A R SCOTCH CAP 816
RR SCOTCHMAN 2999
ERICA LASSIE OF R R 8464

SHEIDAGHAN GREAT SCOT 44Z

CRESCENT CREEK TRADITION 177S
SHEIDAGHAN ELBA 860U
CRESCENT CREEK ELBA 152S

HF KODIAK 5R
HF TIGER 5T
HF ECHO 84R

MACNAB IVY 379Y

F A R KRUGERRAND 410H
MACNAB IVY 2R
WAVENY IVY 4K

| | |
|--------|------|
| BW | 85 |
| WW | 833 |
| B EPD | -0.2 |
| W EPD | 44 |
| Y EPD | 92 |
| Milk | 24 |
| CE EPD | 11 |



| | | | |
|---------|--------|---------|----------|
| Calves | Avg BW | Adj 205 | Adj 365 |
| Males | 81 lbs | 640 lbs | 1178 lbs |
| Females | 79 lbs | 593 lbs | 813 lbs |

THE SASK ANGUS TOURS HAVE BECOME A MUST DO TRIP FOR MANY BREEDERS. THE 2017 TOUR TOOK US TO THE NORTH EAST OF SASKATCHEWAN. ON THIS TOUR WE VISITED SOME EXCELLENT HERDS. ONE STOP WAS MCNABB ANGUS, WHERE WE SAW AN OUTSTANDING SET OF CATTLE. TO MANY, 379E WAS PROBABLY THE STANDOUT BULL CALF ON THE TOUR. HIS SIRE WAS KNOWN TO OUR PROGRAM, AND HIS DAM WAS PROBABLY ONE OF THE BEST COWS ON DISPLAY THAT DAY. THE BULL WAS NOT AVAILABLE SALE DAY, BUT THRU A LONG LIST OF EVENTS WE FEEL VERY FORTUNATE TO ACQUIRE HIS SERVICE. THE BULL IS OWNED JOINTLY WITH SHEIDAGHAN ANGUS. HIS PROGENY ARE MODERATE FOR BIRTH AND HIGH FOR PERFORMANCE. THE FEMALES ARE EXCELLENT, AND SO THEY SHOULD BE WITH THE AMOUNT OF "ELITE" DAMS IN HIS PEDIGREE.

lot
33

CRESCENT CREEK HIGHLANDER 75H

Male WOS 75H January 29 2020 2154253

MACNAB SCOTCHMAN 379E

SINCLAIR ENTREPRENEUR 8R101
MC CUMBER 8R101 RITO 1136
MISS WIX 7176 OF MC CUMBER

CRESCENT CREEK LADY BATE 54D

GDAR TRAVELER 235
CRESCENT CREEK LADY BATE 49R
CRESCENT CREEK LADY BATE 50F

| | |
|--------|------|
| BW | 83 |
| WW | 700 |
| YW | 1318 |
| CE | ** |
| B EPD | 1.1 |
| W EPD | 44 |
| Y EPD | 88 |
| Milk | 21 |
| CE EPD | 6 |



A definite herd bull candidate from the Scotchman 379E bull. This fellow puts it altogether when it comes to muscle mass & bone structure. The dam 54D stems back to the prolific Lady Bate cow family. Both the grand mother and great grand mother produced into their 15th year. Longevity at its best. You will notice this fellow has a bit of an enlarged naval only caused by a navel ill that was difficult to clear up. A definite sale feature.

Lot 33

lot
34**CRESCENT CREEK SCOTHMAN 127H**

Male WOS 127H February 15 2020 2161525

MACNAB SCOTCHMAN 379E

MC CUMBER 8R101 RITO 1136
CRESCENT CREEK ENTREPRENEUR105A
CRESCENT CREEK HEROINE 119U

CRESCENT CREEK CRUSHMAID 65C

CRESCENT CREEK TOMBOY 15W
CRESCENT CREEK CRUSHMAID 77Z
DRYLAND CRUSHMAID 73Z

| | |
|--------|------|
| BW | 75 |
| WW | 670 |
| YW | 1210 |
| CE | *** |
| B EPD | -0.1 |
| W EPD | 37 |
| Y EPD | 70 |
| Milk | 24 |
| CE EPD | 9 |



One of the royally bred bulls offered with cow families like Crushmaid, Rosebud & Heroine cornerstone families in his pedigree. The McCumber bull excelled our program in maternal greatness.

lot
35**CRESCENT CREEK NORTHERNER 45H**

Male WOS 45H January 22 2020 2152521

MACNAB SCOTCHMAN 379E

MC CUMBER 8R101 RITO 1136
CRESCENT CREEK ENTREPRENEUR105A
CRESCENT CREEK HEROINE 119U

CRESCENT CREEK PRIDE 133D

CRESCENT CREEK CHIEF 80G
WIL-DORR 87U PRIDE 14X
CRESCENT CREEK PRIDE 87U

| | |
|--------|------|
| BW | 78 |
| WW | 620 |
| YW | 1215 |
| CE | *** |
| B EPD | 0.1 |
| W EPD | 34 |
| Y EPD | 70 |
| Milk | 22 |
| CE EPD | 8 |

This bull boasts amazing length, shape, and eye appeal. Every time he gets on the move he's something to see. This would be my pick behind the Lot 33 as favorite in the sire group. He will make friends come sale day.

lot
36**CRESCENT CREEK NORTHERNER 90H**

Male WOS 90H February 01 2020 2158175

MACNAB SCOTCHMAN 379E

SINCLAIR ENTREPRENEUR 8R101
MC CUMBER 8R101 RITO 1136
MISS WIX 7176 OF MC CUMBER

CRESCENT CREEK EULA 124C

GDAR TRAVELER 235
CRESCENT CREEK EULA 134R
CRESCENT CREEK EULA 63H

| | |
|--------|------|
| BW | 76 |
| WW | 681 |
| YW | 1237 |
| CE | *** |
| B EPD | -1.2 |
| W EPD | 36 |
| Y EPD | 66 |
| Milk | 24 |
| CE EPD | 10 |



lot
37

CRESCENT CREEK NORTHERNER 77H

Male WOS 77H January 29 2020 2154254

MACNAB SCOTCHMAN 379E

CHAPMAN MEMENTO 0505X
CHAPMAN MEMENTO 3589A
CHAPMAN KAWICH LADY 8065U

CRESCENT CREEK BLACKCAP 92D

SINCLAIR ADDED VALUE 5PV44
CRESCENT CREEK BLACKBIRD 162Z
DR BLACKCAP 461

| | |
|--------|------|
| BW | 96 |
| WW | 690 |
| YW | 1311 |
| CE | ** |
| B EPD | 1.7 |
| W EPD | 44 |
| Y EPD | 86 |
| Milk | 31 |
| CE EPD | 5 |

JOIN US FOR OUR
OPEN HOUSE MARCH
20 & 21



lot
38

CRESCENT CREEK NORTHERNER 84H

Male WOS 84H January 31 2020 2154257

MACNAB SCOTCHMAN 379E

S CHISUM 6175
S CHISUM 0206
S VANNA 358

CRESCENT CREEK QUEEN RUTH 63D

RR SCOTCHMAN 2999
CRESCENT CREEK QUEEN RUTH 155T
CRESCENT CREEK QUEEN RUTH 02J

| | |
|--------|------|
| BW | 85 |
| WW | 665 |
| YW | 1214 |
| CE | ** |
| B EPD | 2.6 |
| W EPD | 46 |
| Y EPD | 90 |
| Milk | 19 |
| CE EPD | 3 |

Really coming into his own now, great hair with extra length and eye appeal. A great foot at the base and great bone. Another 379 bull to note. The 63D cow just keeps getting it right.



lot
39

CRESCENT CREEK SCOTCHMAN 96H

Male WMO 96H February 03 2020 2154240

MACNAB SCOTCHMAN 379E

S MCCOY 124
S MCCOY 373
S JASMINE 492

CRESCENT CREEK EULA 48D

CRESCENT CREEK PACESETTER 16U
CRESCENT CREEK EULA 22X
CRESCENT CREEK EULA 190T

| | |
|--------|------|
| BW | 83 |
| WW | 735 |
| YW | 1235 |
| CE | *** |
| B EPD | -0.2 |
| W EPD | 45 |
| Y EPD | 74 |
| Milk | 21 |
| CE EPD | 8 |

Note the Eula cow family packed with maternal power. A big herdbull presence with this bull.



CRESCENT CREEK ROSEBUD 101T

FLUSH BROTHERS



R R SCOTCHCAP 9440
E X A R SCOTCH CAP 816
LEACHMAN BLACKCAP 2202

RR SCOTCHMAN 2999

R R FERDINAND 758D
ERICA LASSIE OF R R 8464
ERICA LASSIE OF R R 4580

CRESCENT CREEK ROSEBUD 101T

C H QUANTUM 3330
GDAR QUANTUM 963
G D A R MISS KEM 080

CRESCENT CREEK ROSEBUD 70M

DOUBLE BAR ROGUE
CRESCENT CREEK ROSEBUD 38K
CRESCENT CREEK ROSEBUD 115F

lot
40

CRESCENT CREEK LOOKOUT 60H

Male ET WOS 60H January 26 2020 2177834



| | | | | | | | | |
|--------|---------|----------|---------|-------------|-----------|-----------|----------|-----------|
| BW: 74 | WW: 700 | YW: 1190 | CE: *** | B EPD: -0.1 | W EPD: 36 | Y EPD: 62 | MILK: 18 | CE EPD: 3 |
|--------|---------|----------|---------|-------------|-----------|-----------|----------|-----------|

lot
41

CRESCENT CREEK

Male ET WOS 60H January 26 2020 2177834

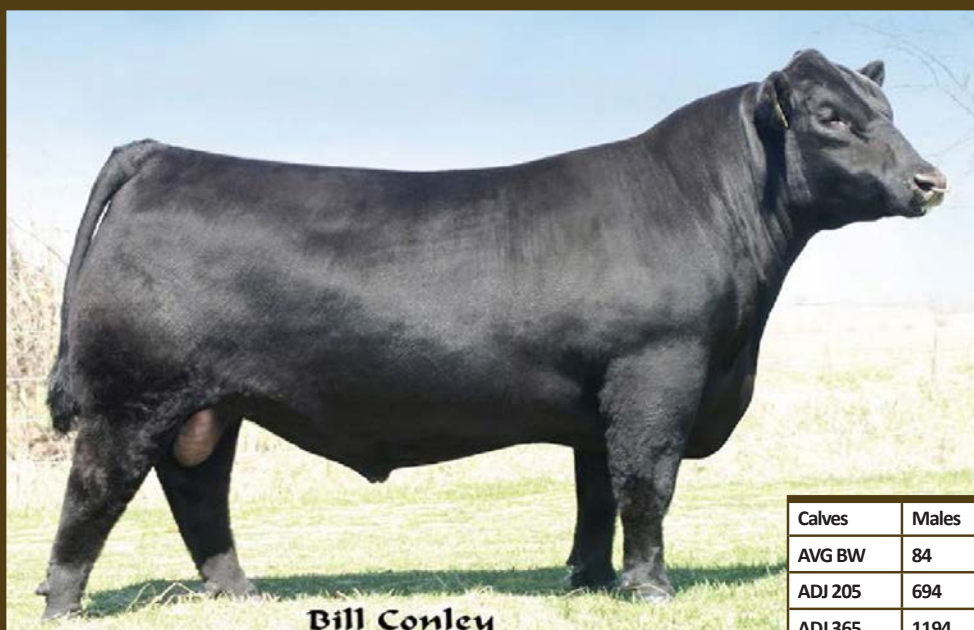


| | | | |
|--------|---------|----------|--------|
| BW: 92 | WW: 625 | YW: 1112 | CE: ** |
|--------|---------|----------|--------|

These set of 3 flush brothers are peas in a pod. All example foot quality, style, testicle, and functional bulls that will work for your female. We could go on and on about the legacy of 101T has left here in terms of females retained and quality of bulls that will work for your brothers and the quality they will add for you. Each is unique in their own way and will work for your program. Circle Quality is here.

K ROTHERS

B C LOOKOUT 7024



| Calves | Males | Females |
|---------|-------|---------|
| AVG BW | 84 | 80 |
| ADJ 205 | 694 | 615 |
| ADJ 365 | 1194 | 870 |

D H D TRAVELER 6807
O C C EMBLAZON 854E
DIXIE ERICA OF CH 1019

O C C LEGEND 616L
O C C GLADIATOR 612G
O C C BLACKBIRD 632J
O C C BLACKBIRD 824G

B C LOOKOUT 7024

PAPA POWER 096
PAPA EQUATOR 2928
PAPA ENVIOUS BLACKBIRD 8849
GIBBET HILL MIGNONNE E37
Q A S TRAVELER 23-4
GIBBET HILL MIGNONNE TR 29
GIBBET HILL MIGNONNE S 24

CREEK LOOK OUT 52H

OS 52H January 23 2020 2177833



BW: 102 WW: 721 YW: 1332 CE: * B EPD: 3.4 W EPD: 40 Y EPD: 77 MILK: 18 CE EPD: 3

lot
42

CRESCENT CREEK LOOK OUT 110H

Male ET WOS 110H February 07 2020 2177838



BW: 102 WW: 721 YW: 1332 CE: * B EPD: 3.4 W EPD: 40 Y EPD: 77 MILK: 18 CE EPD: 3

ask for you. These bulls stand out for the fact they are packed with maternal power that will help you raise the next great
that have been sold. The quality of bulls is exemplified here as you will see in person as well. We are very excited about these
these boys and come check them out. An absolute treat to see these bulls grow and take the next step to breeding stock.

Feature Lot



lot
43

CRESCENT CREEK GREAT ONE 99H

Male ET WOS 99H February 04 2020 2177864

SITZ DASH 10277
BARSTOW CASH
BARSTOW QUEEN W16

BSF HOT LOTTO 1401

SILVEIRAS EL CAPITAN 6510
BSF PRINCESS EL CAP W2
B S F PRINCESS TCF N2

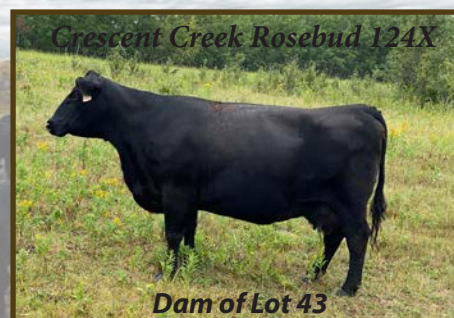
LOOKOUT PACESETTER 258M
CRESCENT CREEK PACESETTER 16U
CRESCENT CREEK STUMPIE 9R

CRESCENT CREEK ROSEBUD 124X

RR SCOTCHMAN 2999
CRESCENT CREEK ROSEBUD 86U
CRESCENT CREEK ROSEBUD 99N

| | |
|--------|------|
| BW | 85 |
| WW | 642 |
| YW | 1244 |
| CE | ** |
| B EPD | 1.6 |
| W EPD | 60 |
| Y EPD | 99 |
| Milk | 20 |
| CE EPD | 4 |

A embryo bull out of the popular BSF Hot lotto out of another excellent donor cow for us 124X. This guy boasts a impressive yearling weight EPD of 101. This bull combines two of the most influencial bulls to walk at Crescent Creek in Scotchman 2999 and Pacesetter 16U with his mother being a Rosebud on top of it. A lot of greats in one place. Note this one.



lot
44

CRESCENT CREEK MOMENTO 62H

Male WOS 62H January 26 2020 2154248

SINCLAIR MEMENTO 8RL5
CHAPMAN MEMENTO 0505X
CROWFOOT REV ERICA 5752R

CHAPMAN MEMENTO 3589A

CROWFOOT EQUATION 5793R
CHAPMAN KAWICH LADY 8065U
CHAPMAN KAWICH LADY 434P

S CHISUM 6175
S CHISUM 0206
S VANNA 358

CRESCENT CREEK HEROINE 50D

CAR IDEAL 061
CRESCENT CREEK HEROINE 34T
CRESCENT CREEK HEROINE 68F

| | |
|--------|------|
| BW | 87 |
| WW | 671 |
| YW | 1139 |
| CE | ** |
| B EPD | 3.1 |
| W EPD | 39 |
| Y EPD | 60 |
| Milk | 29 |
| CE EPD | 0 |



lot
45

CRESCENT CREEK COUNSELOR 63H

Male WOS 63H January 26 2020 2154249

CONNEALY MENTOR 7374
CONNEALY COUNSELOR
S A V BISMARCK 5682

HA COUNSELOR 5118

S A V BISMARCK 5682
HA EVER LADY 1575
HA EVER LADY 8066

LEACHMAN RIGHT TIME
LT BANDWAGON 3105
LT MS VIKINGS VALUE 0256

CRESCENT CREEK PRIDE 72F

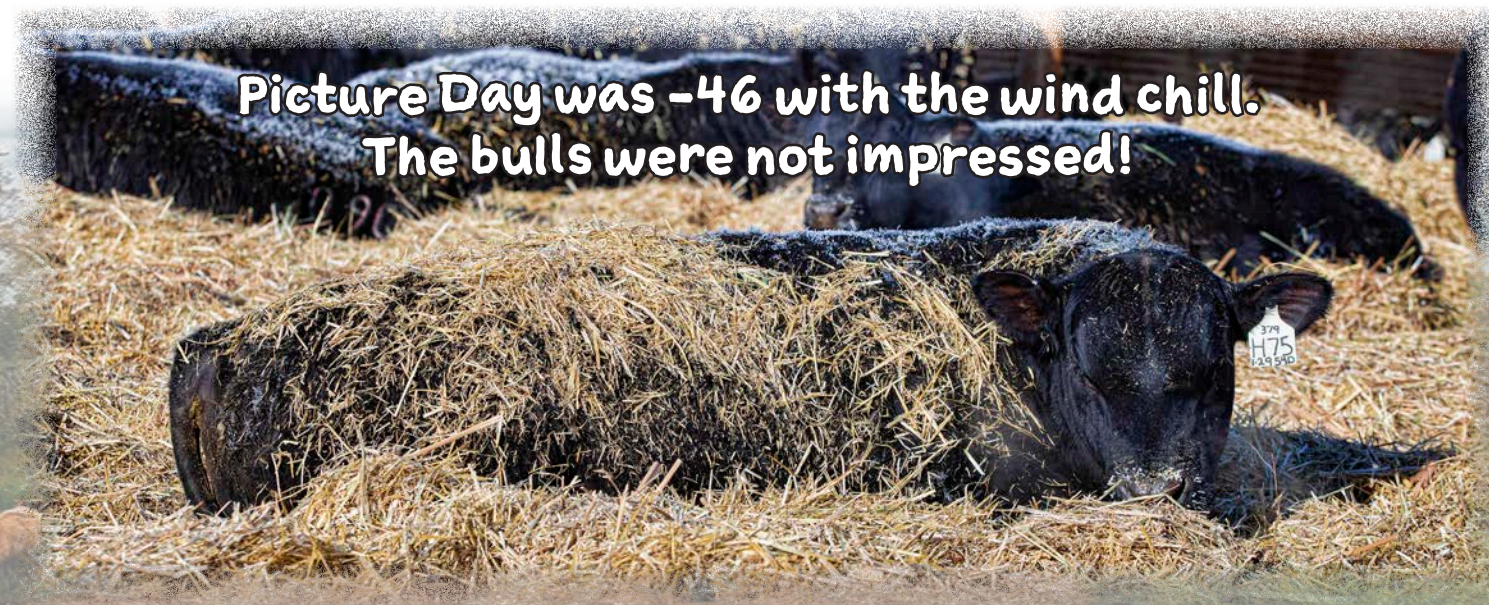
CHAPMAN MEMENTO 3589A
CRESCENT CREEK PRIDE 22D
CRESCENT CREEK ROSEBUD 148Z

| | |
|--------|------|
| BW | 78 |
| WW | 748 |
| YW | 1331 |
| CE | *** |
| B EPD | 0.7 |
| W EPD | 52 |
| Y EPD | 97 |
| Milk | 28 |
| CE EPD | 9 |



A pen favorite for your heifer bull needs. An appealing birth EPD with a impressive yearling EPD to add some \$\$ to your bottom line when calving out those heifers. An interesting pedigree to go along with this stylish and correct made bull. The 5118 calves are standouts once again in the 2021 calve crop. Long made and stylish with muscle expression you will love. 3 stars here.

Picture Day was -46 with the wind chill.
The bulls were not impressed!





CRESCENT CREEK ENTREPENEUR 121D

Male WOS 121D February 17 2016 1917066

SINCLAIR ENTREPRENEUR 8R101
MC CUMBER 8R101 RITO 1136
MISS WIX 7176 OF MC CUMBER

CRESCENT CREEK ENTREPENEUR105A

MINBURN MAIN EVENT 82R
CRESCENT CREEK HEROINE 119U
CRESCENT CREEK HEROINE 13L

O C C EMBLAZON 854E
B C C-J C L EMBLAZON 038-287
B C C 1531 ELDORENE 826-038

CRESCENT CREEK QUEEN RUTH 67Y

MINBURN MAIN EVENT 82R
CRESCENT CREEK QUEEN RUTH 56T
CRESCENT CREEK QUEEN RUTH 66M

| | |
|--------|------|
| BW | 86 |
| WW | 870 |
| YW | 1225 |
| B EPD | 3.8 |
| W EPD | 48 |
| Y EPD | 79 |
| Milk | 16 |
| CE EPD | -7 |



| | | | |
|---------|--------|---------|----------|
| Calves | Avg BW | Adj 205 | Adj 365 |
| Males | 90 lbs | 698 lbs | 1188 lbs |
| Females | 87 lbs | 650 lbs | 797 lbs |

121D WAS CHOSEN TO CARRY ON THE MCCUMBER RITO 1136 GENETICS. HIS SIRE WAS A STANDOUT SIRE FOR BENLOCK FARMS & US. HIS DAM IS AN ELITE DAM AND STEMS FROM ONE OF THE MOST PRODUCTIVE COW FAMILIES HERE. PRESENTLY WE HAVE 3 SONS OF THIS COW WORKING IN OUR PROGRAM. 121D OFFERS OVER THE TOP MUSCLING AND EXCELLENT LENGTH. CO-OWNED WITH MCS ANGUS- MEL & MARGE SOLVASON.

lot
46

CRESCENT CREEK RITO 153H

Male WOS 153H February 22 2020 2186331

CRESCENT CREEK ENTREPENEUR121D

LOOKOUT PACESETTER 258M
CRESCENT CREEK PACESETTER 16U
CRESCENT CREEK STUMPIE 9R

CRESCENT CREEK ROSEBUD 80Z

SILVER DOME DYNASTY 19T
CRESCENT CREEK ROSEBUD 87X
CRESCENT CREEK ROSEBUD 144R

| | |
|--------|------|
| BW | 98 |
| WW | 612 |
| YW | 1250 |
| CE | * |
| B EPD | 5 |
| W EPD | 38 |
| Y EPD | 68 |
| Milk | 18 |
| CE EPD | -6 |

Feature Lot



A bull you need to see, a pen topping bull for his age. A big frame long made bull that is very impressive on the move. A big testicle, big footed bull that is very impressive to see in person. Backed by the rosebud cow family.

lot
47**CRESCENT CREEK RITO 159H**

Male WOS 159H February 24 2020 2186332

CRESCENT CREEK ENTREPENUER121D

C A R IDEAL 650
CAR IDEAL 061
C A R MISS VIKING 601

CRESCENT CREEK HEROINE 34T

RITO 8094 PRAIRIELANE 2060 AMF
CRESCENT CREEK HEROINE 68F
CRESCENT CREEK HEROINE 81C

JOIN US FOR OUR
OPEN HOUSE MARCH
20 & 21

| | |
|--------|------|
| BW | 106 |
| WW | 640 |
| YW | 1352 |
| CE | * |
| B EPD | 7.8 |
| W EPD | 42 |
| Y EPD | 78 |
| Milk | 21 |
| CE EPD | -14 |

lot
48**CRESCENT CREEK RITO 182H**

Male WOS 182H March 10 2020 2186333

CRESCENT CREEK ENTREPENUER121D

SINCLAIR ENTREPRENEUR 8R101
MC CUMBER 8R101 RITO 1136
MISS WIX 7176 OF MC CUMBER

CRESCENT CREEK ANDREA 122D

BRONYX EMBLAZON 58T
CRESCENT CREEK ANDREA 16W
FRL ANDREA 707T

Youngest bull in the sale offering but is far from it when seeing him. Long made with a great foot at the base. He will get out and breed cows and add performance to your bottom line. A pen favorite of the 121 calves.

| | |
|--------|------|
| BW | 97 |
| WW | 725 |
| YW | 1239 |
| CE | * |
| B EPD | 5.8 |
| W EPD | 48 |
| Y EPD | 80 |
| Milk | 16 |
| CE EPD | -10 |

lot
49**CRESCENT CREEK FORTUNATE 136H**

Male WOS 136H February 17 2020 2161530

CRESCENT CREEK FORTUNATE 8B

SINCLAIR EMULATE 7XT28
SINCLAIR FORTUNATE SON
SINCLAIR BLACKBIRD 2P8 7079

CRESCENT CREEK PACESETTER 16U
CRESCENT CREEK ROSEBUD 124X
CRESCENT CREEK ROSEBUD 86U

CHAPMAN MEMENTO 0505X
CHAPMAN MEMENTO 3589A
CHAPMAN KAWICH LADY 8065U

CRESCENT CREEK BLACKCAP 14D

SINCLAIR ADDED VALUE 5PV44
CRESCENT CREEK BLACKCAP 156Z
DR BLACKCAP 40Z

| | |
|--------|------|
| BW | 78 |
| WW | 651 |
| YW | 1262 |
| CE | ** |
| B EPD | 0.3 |
| W EPD | 40 |
| Y EPD | 82 |
| Milk | 24 |
| CE EPD | 6 |





CRESCENT CREEK FOREMEN 25E

Male WOS 25E January 23 2017 1979175

SINCLAIR EMULATE 7XT28
SINCLAIR FORTUNATE SON
SINCLAIR BLACKBIRD 2P8 7079
CRESCENT CREEK FORTUNATE 8B
CRESCENT CREEK PACESETTER 16U
CRESCENT CREEK ROSEBUD 124X
CRESCENT CREEK ROSEBUD 86U

SINCLAIR ENTREPRENEUR 8R101
MC CUMBER 8R101 RITO 1136
MISS WIX 7176 OF MC CUMBER
CRESCENT CREEK BLACKBIRD 82A
B C LOOKOUT 7024
CRESCENT CREEK ROSEBUD 43W
CRESCENT CREEK ROSEBUD 24L

| | |
|--------|------|
| BW | 81 |
| WW | 830 |
| YW | 1352 |
| B EPD | -1.7 |
| W EPD | 34 |
| Y EPD | 53 |
| Milk | 18 |
| CE EPD | 7 |



| Calves | Avg BW | Adj 205 | Adj 365 |
|---------|--------|---------|----------|
| Males | 74 lbs | 699 lbs | 1152 lbs |
| Females | 76 lbs | 626 lbs | 828 lbs |

IN OUR QUEST FOR CALVING EASE WE A'D TO BULLS THAT HAD LOW BIRTH NUMBERS AND CALVING EASE. RESULTS WERE ALWAYS MIXED AS CONSISTANCY NEVER SEEMED TO BE THERE. WE FELT WE HAD COWS AND WALKING BULLS THAT WOULD MORE THAN MEET OUR NEEDS. 25E WAS RETAINED AND USED EXCLUSIVELY ON HEIFERS - THE RESULTS WERE WHAT WE EXPECTED. HIS MOTHER BEING A ROSEBUD AND THE SIRE OFFERING OUTCROSS GENETICS. WE HAVE USED HIM FOR 3 YEARS ON HEIFERS VERY SUCCESSFULLY. MODERATE BIRTH WITH EXCELLENT MUSCLE PATTERN AND WEANING WEIGHTS. HE IS A HEIFER BULL CANDIDATE FOR SOME.

lot
50

CRESCENT CREEK MUSCLES 119H

Male WOS 119H February 12 2020 2161521

CRESCENT CREEK FOREMEN 25E

HA OUTSIDE 3008
HA OUTSIDE 5161 OSF
HA BLACKCAP LADY 2338

CRESCENT CREEK ERROLITE 179F

CRESCENT CREEK EMBLAZON 109X
NORDAL 74X ERELITE 274A
NORDAL 74R ERELITE 74X

| | |
|--------|------|
| BW | 88 |
| WW | 767 |
| YW | 1289 |
| CE | ** |
| B EPD | 2.3 |
| W EPD | 45 |
| Y EPD | 73 |
| Milk | 25 |
| CE EPD | 5 |



Out of Wade's favorite cow, she really hit it out of the park with this one. The 25E bull has been one of the most consistent breeding and calving bulls to walk. This guys bulls haven't missed a beat with moderate frame, perfect foot, great shape, and muscle expression.

lot
51**CRESCENT CREEK FOREMAN 107H**

Male WMO 107H February 6 2020 2187123

CRESCENT CREEK FOREMEN 25ELEACHMAN RIGHT TIME
LT BANDWAGON 3105
LT MS VIKINGS VALUE 0256**CRESCENT CREEK ANNIE K 87F**MC CUMBER 8R101 RITO 1136
CRESCENT CREEK ANNIE K 55D
EASTONDALE ANNIE K 30'10

| | |
|--------|------|
| BW | 68 |
| WW | 736 |
| YW | 1237 |
| CE | *** |
| B EPD | -1.3 |
| W EPD | 43 |
| Y EPD | 70 |
| Milk | 25 |
| CE EPD | 8 |

I truly think it speaks volumes when you get this type of quality and have your breeding being the main part on the top and bottom. A long-made Foremen bull out of the always good Annie K cow family. Quality breed into this bull top and bottom.



Lot 51

lot
52**CRESCENT CREEK FOREMAN 154H**

Male WMO 154H February 22 2020 2165690

CRESCENT CREEK FOREMEN 25EHF TIGER 5T
HF UNIT 14C
HF ROSEBUD 276Z**MERIT PRIDE 8099F**MERIT BIG DAWG 3049A
MERIT PRIDE 6143D
MERIT PRIDE 2014

| | |
|--------|------|
| BW | 82 |
| WW | 771 |
| YW | 1347 |
| CE | *** |
| B EPD | -1.8 |
| W EPD | 43 |
| Y EPD | 71 |
| Milk | 21 |
| CE EPD | 7 |

This guy hits it home with calving ease. Out of our go to heifer bull and Jilt cow, this first calf heifer hit the mark with her first calf. Clean and smooth front, perfect for calving easy but carries good muscle in his quarter and straight and correct feet.



Lot 52

lot
53**CRESCENT CREEK FOREMAN 168H**

Male WMO 168H February 29 2020 2186334

CRESCENT CREEK FOREMEN 25EEXAR CLASSEN 1422B
EF COLOSSAL 520
EXAR BLACKBIRD 5877**NYK BLACK LADY 5F**N7'S ELVIS 9Y
NYK BLACK LADY 3C
SOO LINE BLACK LADY 0191

| | |
|--------|------|
| BW | 78 |
| WW | 742 |
| YW | 1271 |
| CE | *** |
| B EPD | 0.8 |
| W EPD | 45 |
| Y EPD | 77 |
| Milk | 22 |
| CE EPD | 4 |

The Foremen bull just doesn't miss with these calves. Another moderate, low birth weight, smooth, and correct made bull. You can appreciate the guy when he gets out and walks. Good muscle expression and foot to cover ground. First calf NYK heifer earned her keep after that one.



Lot 53



VINCENT SOMOGYI

Box 121, Willowbrook, SK S0A 4P0
306.621.1453 | 306.782.7499

lot
54

CRESCENT CREEK FOREMAN 186H

Male WOS 186H March 13 2020 2168418

CRESCENT CREEK FOREMEN 25E

BEAUFORT OF WYE
SCHEARBROOK SHOSHONE
SHOSHONE BLACKBIRD

CRESCENT CREEK BLACKCAP 100F

CHAPMAN MEMENTO 3589A
CRESCENT CREEK BLACKCAP 92D
CRESCENT CREEK BLACKBIRD 162Z

| | |
|--------|------|
| BW | 68 |
| WW | 751 |
| YW | 1239 |
| CE | *** |
| B EPD | -2 |
| W EPD | 33 |
| Y EPD | 50 |
| Milk | 24 |
| CE EPD | 8 |



Note that "Schearbroke Shoshone" sired mother. These genetics would be the base of many of the most popular bloodlines today. To see it so close in a pedigree is neat.

lot
55

CRESCENT CREEK FOREMAN 185H

Male WMO 185H March 12 2020 2186790

CRESCENT CREEK FOREMEN 25E

MC CUMBER 8R101 RITO 1136
CRESCENT CREEK ENTREPRENEUR105A
CRESCENT CREEK HEROINE 119U

CRESCENT CREEK DAISY ANN 76D

S CHISUM 0206
BAR D K DAISY ANN 48'12
BAR D K DAISY ANN 10'07

| | |
|--------|------|
| BW | 82 |
| WW | 658 |
| YW | 1227 |
| CE | *** |
| B EPD | 0.4 |
| W EPD | 37 |
| Y EPD | 66 |
| Milk | 17 |
| CE EPD | 5 |



If you didn't see that he was a March calf then you would never notice. A younger bull but makes up for it. Stamped just like his half-brothers, this guy will go out and breed your heifers and not skip a beat. Good foot and sound make up makes him a easy candidate.

INNOVATIVE
PRODUCTS
ENHANCING YOUR NUTRITION
PROGRAM
MAKING YOU MORE
PROFITABLE

Contact your beef territory
manager to learn more:

Jessica Hextall (204)901-3058

trouw nutrition
a Nutreco company



Add Value to your Angus

Order your Angus tags
1-866-571-8093
www.cdnangus.ca



**PRETTY VIEW
STOCK FARM LTD.**

Corn & Forage Seed Sales

LICENSED DRONE
PILOT
Photography & Services

**BIG
O'S**
BOUNCY CASTLE
RENTALS

PVSE

Phone / Text: 306-562-7925 | Email: ivan@prettyview.net

Ivan Olynyk

NR MILL

New Rosedale Feedmill

Feeding
Your
Needs

Dan & Jackie Sawley
Dealer

Cell: 306.607.9042

Box 2
Fenwood, SK
S0A 0Y0

Email: jackie@sawley.ca
nrfeedmill.com



SFL HIGH VOLTAGE 866F

Male SFL 866F February 5 2018 2047523

CONNEALY STIMULUS 8419
CONNEALY SPUR
JAZZA OF CONANGA 8594

VERMILION HUNTLEY

SITZ MADISON 10477
VERMILION BARBARAMERE 0738
VERMILION BARBARAMERE 2156

LEACHMAN RIGHT TIME
B HILLS FRL DURATION 606
H A BELETTA 0219

B HILLS JL FOREVER LADY 010

DLMJ IMAGE MAKER 2S
LLB FOREVER LADY 664U
DRYLAND FOREVER LADY 354

| | |
|--------|------|
| BW | 88 |
| WW | 700 |
| YW | 1323 |
| B EPD | 2.8 |
| W EPD | 56 |
| Y EPD | 104 |
| Milk | 25 |
| CE EPD | 1 |



| | | | |
|---------|--------|---------|----------|
| Calves | Avg BW | Adj 205 | Adj 365 |
| Males | 84 lbs | 669 lbs | 1177 lbs |
| Females | 77 lbs | 650 lbs | 849 lbs |

HIGH VOLTAGE WAS ACQUIRED FROM THE SMART FARMS PROGRAM. HIS OUTCROSS PEDIGREE BACKED BY ONE OF THE MOST PROLIFIC COW FAMILIES IN THE BREED "FOEVER LADY" CAPTURED OUR ATTENTION. HIS FIRST CALF CROP IS AS UNIFORM AS ANY. THE BULLS ARE STOUT AND PERHAPS CAN OFFER SOME EXTRA FRAME WITH CALVING EASE. THE FEMALES AS WELL ARE VERY FEMININE AND BROODY.

lot
56

CRESCENT CREEK SPUR 18H

Male WOS 18H January 14 2020 2151467

SFL HIGH VOLTAGE 866

HA OUTSIDE 3008
HA OUTSIDE 5161 OSF
HA BLACKCAP LADY 2338

CRESCENT CREEK DINTERPRIDE 182E

CRESCENT CREEK PACESETTER 16U
CRESCENT CREEK DINTERPRIDE 96A
BEVERLY HILLS D PRIDE 729

| | |
|--------|------|
| BW | 78 |
| WW | 625 |
| YW | 1146 |
| CE | *** |
| B EPD | 1.1 |
| W EPD | 37 |
| Y EPD | 66 |
| Milk | 25 |
| CE EPD | 4 |

A power bull to see and a reason why he leads these guys off. Long made with a great head and neck extension. We are sure excited to see how these Spur bulls grow and perform. 18H will make some friends in the pen.



lot
57

CRESCENT CREEK SPUR 39H

Male WOS 39H January 20 2020 2152517

SFL HIGH VOLTAGE 866

CHAPMAN MEMENTO 0505X
CHAPMAN MEMENTO 3589A
CHAPMAN KAWICH LADY 8065U

CRESCENT CREEK DANA 1E

BEVERLY HILLS FANDANGO 404
CRESCENT CREEK DANA 91U
CRESCENT CREEK DANA 35M

| | |
|--------|------|
| BW | 72 |
| WW | 635 |
| YW | 1239 |
| CE | *** |
| B EPD | 3.4 |
| W EPD | 44 |
| Y EPD | 88 |
| Milk | 29 |
| CE EPD | -1 |



lot
58**CRESCENT CREEK SPUR 58H**

Male WOS 58H January 25 2020 2154245

SFL HIGH VOLTAGE 866

CHAPMAN MEMENTO 0505X
 CHAPMAN MEMENTO 3589A
 CHAPMAN KAWICH LADY 8065U

CRESCENT CREEK ROSEBUD 73E

CRESCENT CREEK SUPER X 188R
 CRESCENT CREEK ROSEBUD 25T
 CRESCENT CREEK ROSEBUD 14R

| | |
|--------|------|
| BW | 84 |
| WW | 640 |
| YW | 1168 |
| CE | ** |
| B EPD | 2.3 |
| W EPD | 41 |
| Y EPD | 76 |
| Milk | 25 |
| CE EPD | 2 |

lot
59**CRESCENT CREEK REAL DEAL 68H**

Male WOS 68H January 28 2020 2154250

SFL HIGH VOLTAGE 866

CHAPMAN MEMENTO 0505X
 CHAPMAN MEMENTO 3589A
 CHAPMAN KAWICH LADY 8065U

CRESCENT CREEK JOAN 7E

SITZ DASH 10277
 CRESCENT CREEK JOAN 48Y
 GDAR JOAN 9175

| | |
|--------|------|
| BW | 80 |
| WW | 671 |
| YW | 1200 |
| CE | *** |
| B EPD | 1.1 |
| W EPD | 48 |
| Y EPD | 87 |
| Milk | 29 |
| CE EPD | 6 |

Another neat bull. Great hair and long made bull with HUGE testicles. Out of the Great Joan cow family, I'm excited to see how he turns out.

lot
60**CRESCENT CREEK HUNTLEY 88H**

Male WOS 88H February 01 2020 2158173

SFL HIGH VOLTAGE 866

EXAR BLUE CHIP 1877B
 OSU BLUE CHIP 4230
 OSU JILT 0105

DIAMOND T MERLE 1776 - 4230B

WJ JOKER 281X
 WJ CROWFOOT MERLE 3043A
 CROWFOOT MERLE 6678S

| | |
|--------|------|
| BW | 80 |
| WW | 628 |
| YW | 1239 |
| CE | *** |
| B EPD | 1.2 |
| W EPD | 49 |
| Y EPD | 92 |
| Milk | 18 |
| CE EPD | 4 |



lot
61**CRESCENT CREEK SPUR 124H**

Male KOS 124H February 12 2020 2186791

SFL HIGH VOLTAGE 866

CHAPMAN MEMENTO 0505X
CHAPMAN MEMENTO 3589A
CHAPMAN KAWICH LADY 8065U

CRESCENT CREEK STUMPIE 121E

SINCLAIR FORTUNATE SON
CRESCENT CREEK STUMPIE 3B
CRESCENT CREEK STUMPIE 9R

| | |
|--------|------|
| BW | 78 |
| WW | 685 |
| YW | 1255 |
| CE | *** |
| B EPD | 0.9 |
| W EPD | 45 |
| Y EPD | 84 |
| Milk | 25 |
| CE EPD | 6 |



Note the Stumpie bloodline in this bull. Dating back to the great 9R who is the mother of the herd and sale influencing Pacesetter 16U. 9R just entered the donor program and had 16 calves to date and just added 10 embryos first go at the age of 17. Like before, longevity is the trait that pays. 9R is up there with the greats like Rosebud 115F. A generational cow. Mark this one high as we hit it out of the park when she was 16 with is one. A perfect udder on a cow that is 17 is something to say in itself. A marvel of cow that started as a 4H project and a cow that got Katie through school, a car, a house, and helped with a wedding. We could go on and on about 9R but do not miss out to add this amazing breeding piece to your program. He joins his pen mates with style, performance, and bone. Check him out!

lot
62**CRESCENT CREEK SPUR 173H**

Male WOS 173H March 04 2020 2186328

SFL HIGH VOLTAGE 866

CHAPMAN MEMENTO 0505X
CHAPMAN MEMENTO 3589A
CHAPMAN KAWICH LADY 8065U

CRESCENT CREEK QUEEN RUTH 39E

B C C-J C L EMBLAZON 038-287
CRESCENT CREEK QUEEN RUTH 14W
CRESCENT CREEK QUEEN RUTH 56T

| | |
|--------|------|
| BW | 102 |
| WW | 813 |
| YW | 1342 |
| CE | * |
| B EPD | 6.1 |
| W EPD | 63 |
| Y EPD | 105 |
| Milk | 22 |
| CE EPD | -9 |

This is a bull to take a look at. One of the youngest calves in the sale this year but that is not stopping him from being one of the most impressive in the pen. Big top, great foot, and extra length makes this calf a standout. Out of a up and coming memento daughter that anyone would love. Take a look at this calf for your performance needs.

lot
63**CRESCENT CREEK SPUR 157H**

Male WOS 157H February 24 2020 2165665

SFL HIGH VOLTAGE 866

SINCLAIR FORTUNATE SON
CRESCENT CREEK FORTUNATE 8B
CRESCENT CREEK ROSEBUD 124X

CRESCENT CREEK PRIDE 103E

LOOKOUT HUCK 53T
CRESCENT CREEK ROSEBUD 148Z
CRESCENT CREEK PRIDE 106M

| | |
|--------|------|
| BW | 94 |
| WW | 722 |
| YW | 1271 |
| CE | * |
| B EPD | 4.4 |
| W EPD | 53 |
| Y EPD | 96 |
| Milk | 22 |
| CE EPD | -4 |



lot
64**CRESCENT CREEK SPUR 166H**

Male WOS 166H February 28 2020 2186329

SFL HIGH VOLTAGE 866

CHAPMAN MEMENTO 0505X
CHAPMAN MEMENTO 3589A
CHAPMAN KAWICH LADY 8065U

CRESCENT CREEK LADY BATE 8E

S CHISUM 6175
CRESCENT CREEK LADY BATE 4Z
CRESCENT CREEK HEROINE 076N

Out of a old show heifer she is really hitting the ground running. A bull boasting a good yearling EPD that will add \$ on return and calves that have capacity to be fed out. The 166H has the most style with testicle, bone, and muscle expression to go with. Top of his pen mates. Mark this one.

| | |
|--------|------|
| BW | 96 |
| WW | 694 |
| YW | 1223 |
| CE | * |
| B EPD | 4.8 |
| W EPD | 52 |
| Y EPD | 93 |
| Milk | 24 |
| CE EPD | -6 |

lot
65**CRESCENT CREEK SPUR 151H**

Male DOS 151H February 22 2020 2186335

SFL HIGH VOLTAGE 866

CHAPMAN MEMENTO 0505X
CHAPMAN MEMENTO 3589A
CHAPMAN KAWICH LADY 8065U

CRESCENT CREEK NANCE 97E

CRESCENT CREEK PACESETTER 16U
CRESCENT CREEK BLACK NANCE 83Z
CRESCENT CREEK BLACK NANCE 44X

| | |
|--------|------|
| BW | 101 |
| WW | 726 |
| YW | 1303 |
| CE | * |
| B EPD | 2 |
| W EPD | 43 |
| Y EPD | 77 |
| Milk | 23 |
| CE EPD | -3 |

lot
66**CRESCENT CREEK REAL MCCOY 20H**

Male WOS 20H January 15 2020 2152506

REICH LEAD ON 424
RA LINCOLN W144
RA BRANDY P11

S MCCOY 124

G A R GRID MAKER
S MAYFLOWER 751
S MAYFLOWER 2118

CRESCENT CREEK ALLIANCE 29N
CRESCENT CREEK ALTERNATIVE 516
CRESCENT CREEK LASSIE 48N

CRESCENT CREEK JOAN 13F

SITZ DASH 10277
CRESCENT CREEK JOAN 48Y
GDAR JOAN 9175

| | |
|--------|------|
| BW | 71 |
| WW | 690 |
| YW | 1184 |
| CE | *** |
| B EPD | -1.2 |
| W EPD | 39 |
| Y EPD | 75 |
| Milk | 30 |
| CE EPD | 11 |



20H could easily be the elite heifer bull. McCoy 124 was used here very successfully on heifers. His dam Joan 13F is an exceptional young female that was the pick of the heifer crop for JR Angus from the 2018 "Legacy" sale when we donated the proceeds to the Canadian Angus Foundation. The heifer brought \$17,500 on a bid from Jim Round and Robert Geis. Crescent Creek & JR Angus will donate 15% of the sale of this young bull to the Foundation's 15 for 50 campaign. This campaign is raising money for the Foundation. We would like to congratulate all our fellow breeders who have also donated. We believe the foundation to be a worthy cause.

Crescent Creek **HEIFERS**

As the hype of the spring bull sale season approaches, we are no different than other seedstock producers. We try to put our best foot forward and present outstanding young herd bull prospects. More recently though, we have been very focused on presenting to you what we think are the backbones of many very successful operations. That, of course, is the mother cow. Year after year our heifer selection has been improving to the point that we are truly holding nothing back. We feel very fortunate in the fact that this selection is due to the many years of breeding sound Angus females with traits that make the breed so popular.

Last fall as we drove out and checked these young females as they chewed away on bales, you had to be impressed at how well they adapted. I called them my little cow herd. This was a true test of feed conversion. As you study the offering you can see it didn't hurt their development at all.

Each and every year we look forward to the sale offering of females with as much excitement as the bulls. Our sale group seems to get stronger every year as well. We attribute part of that to the fact of so many of our sale heifers coming from the youngest brood cows in the herd. The newest and freshest genetics from the time tested cow families. No better time to get into some of the best we have to offer. Be prepared to see truly one of the finest offerings.

Our 2020 sale represented some of the best value on open replacement females ever. Some very astute cattlemen saw their value and took them home in multiples. Remember 60% down sale day, 40% October 1, 2021. Value like that is hard to match! Footnotes will be few. The offering speaks for itself.

*Regardless of your needs or price range, we will have heifers
that you can depend on*



CHOICE

CHOICE SET 1



We feel that these two young females may be some of the best ever bred, let alone offered here. Easily the top picks of our entire 2020 calf crop. We think either one has the future potential to become great donor candidate. Genetics that can be used to produce the next herd bull of different lineage that the breed really looks for. Pick & choose with confidence. Stellar cow families.

lot
67

CRESCENT CREEK BARANDA 1H

Female WOS 1H January 06 2020 2151448

HA OUTSIDE 5161

LOOKOUT PACESETTER 258M
CRESCENT CREEK PACESETTER 16U
CRESCENT CREEK STUMPIE 9R

CRESCENT CREEK BARANDA 104Y

RR SCOTCHMAN 2999
CRESCENT CREEK BARANDA 212T
CRESCENT CREEK BARANDA 2J

| | |
|--------|------|
| BW | 65 |
| WW | 790 |
| YW | 832 |
| B EPD | -1.4 |
| W EPD | 41 |
| Y EPD | 65 |
| Milk | 25 |
| CE EPD | 11 |

lot
68

CRESCENT CREEK MISTRESS 53H

Female WOS 53H January 24 2020 2154243

CRESCENT CREEK ALTERNATIVE 54F

CHAPMAN MEMENTO 0505X
CHAPMAN MEMENTO 3589A
CHAPMAN KAWICH LADY 8065U

CRESCENT CREEK MISTRESS 188D

CRESCENT CREEK BRAVE HEART 35F
SHEIDAGHAN MISTRESS 14Z
SMW MISTRESS 22P

| | |
|--------|-----|
| BW | 90 |
| WW | 700 |
| YW | 903 |
| B EPD | 4.6 |
| W EPD | 60 |
| Y EPD | 94 |
| Milk | 28 |
| CE EPD | -3 |

Lot 67- The Outside daughters have become stellar producers here. Young females with excellent udder attachment and super dispositions.

Lot 68- 53H has a very unique pedigree, with all of the best bloodlines that have brought our program to the forefront. Memento, Braveheart & Alliance. Old genetics that are ready to come to the forefront again.



LOTS

CHOICE SET 2



When we flushed 101T we were not surprised with the fantastic results. Pick & choose with confidence from an excellent opportunity to acquire Rosebud females.

lot
69

CRESCENT CREEK ROSEBUD 64H

Female ET WOS 64H January 27 2020 2177835

B C LOOKOUT 7024

E X A R SCOTCH CAP 816
RR SCOTCHMAN 2999
ERICA LASSIE OF R R 8464

CRESCENT CREEK ROSEBUD 101T

GDAR QUANTUM 963
CRESCENT CREEK ROSEBUD 70M
CRESCENT CREEK ROSEBUD 38K

| | |
|--------|-----|
| BW | 71 |
| WW | 607 |
| YW | 775 |
| B EPD | 2.2 |
| W EPD | 38 |
| Y EPD | 69 |
| Milk | 19 |
| CE EPD | 3 |

lot
70

CRESCENT CREEK ROSEBUD 65H

Female ET WOS 65H January 27 2020 2177836

B C LOOKOUT 7024

E X A R SCOTCH CAP 816
RR SCOTCHMAN 2999
ERICA LASSIE OF R R 8464

CRESCENT CREEK ROSEBUD 101T

GDAR QUANTUM 963
CRESCENT CREEK ROSEBUD 70M
CRESCENT CREEK ROSEBUD 38K

| | |
|--------|-----|
| BW | 87 |
| WW | 680 |
| YW | 854 |
| B EPD | 2.2 |
| W EPD | 38 |
| Y EPD | 69 |
| Milk | 19 |
| CE EPD | 3 |



Dam of lots 69 & 70



Lot 70

lot
71**CRESCENT CREEK EULA 41H**

Female WMO 41H January 21 2020 2154224

REICH LEAD ON 424
RA LINCOLN W144
RA BRANDY P11CRESCENT CREEK FORTUNE 67X
CRESCENT CREEK FORTUNE 169C
CRESCENT CREEK QUEEN RUTH 14W**S MCCOY 124**G A R GRID MAKER
S MAYFLOWER 751
S MAYFLOWER 2118**CRESCENT CREEK EULA 80F**CAR IDEAL 061
CRESCENT CREEK EULA 190T
CRESCENT CREEK EULA 94L

| | |
|--------|-----|
| BW | 65 |
| WW | 642 |
| YW | 816 |
| B EPD | 0.3 |
| W EPD | 37 |
| Y EPD | 66 |
| Milk | 25 |
| CE EPD | 8 |

A really appealing heifer out of one of the hardest working blood lines at crescent creek. We believe the fertility is very good in this heifer as her grandmother has rocked the donor program here the last year as "T". A real famine, pretty uttered, and smooth made heifer.



Lot 71



Lot 72



Lot 73



Lot 74

lot
72**CRESCENT CREEK ROSEBUD 35H**

Female WOS 35H January 20 2020 2152515

CRESCENT CREEK ALTERNATIVE 54FRA LINCOLN W144
S MCCOY 124
S MAYFLOWER 751**CRESCENT CREEK ROSEBUD 56C**RR SCOTCHMAN 2999
CRESCENT CREEK ROSEBUD 15A
CRESCENT CREEK ROSEBUD 24L

| | |
|--------|-----|
| BW | 90 |
| WW | 636 |
| YW | 862 |
| B EPD | 4 |
| W EPD | 56 |
| Y EPD | 95 |
| Milk | 26 |
| CE EPD | -1 |

Another one that we could easily keep back to keep building our herd with. A real moderate and thick made heifer with a clean udder coming. The rosebud cow family does it again and a gift in the sale from us is an opportunity for you!

lot
73**CRESCENT CREEK NANCE 74H**

Female DOS 74H January 29 2020 2154259

CRESCENT CREEK ALTERNATIVE 54FCHAPMAN MEMENTO 0505X
CHAPMAN MEMENTO 3589A
CHAPMAN KAWICH LADY 8065U**CRESCENT CREEK NANCE 59D**CRESCENT CREEK PACESETTER 16U
CRESCENT CREEK BLACK NANCE 83Z
CRESCENT CREEK BLACK NANCE 44X

| | |
|--------|-----|
| BW | 81 |
| WW | 636 |
| YW | 862 |
| B EPD | 3.4 |
| W EPD | 60 |
| Y EPD | 100 |
| Milk | 26 |
| CE EPD | 1 |

lot
74**CRESCENT CREEK LADY BATE 69H**

Female WOS 69H January 28 2020 2154251

CRESCENT CREEK ALTERNATIVE 54FCHAPMAN MEMENTO 0505X
CHAPMAN MEMENTO 3589A
CHAPMAN KAWICH LADY 8065U**CRESCENT CREEK LADY BATE 40D**CRESCENT CREEK SCOTCHMAN 46W
CRESCENT CREEK LADY BATE 62Z
CRESCENT CREEK LADY BATE 6N

| | |
|--------|-----|
| BW | 85 |
| WW | 680 |
| YW | 730 |
| B EPD | 3.4 |
| W EPD | 47 |
| Y EPD | 68 |
| Milk | 30 |
| CE EPD | -2 |

Another powerful 54 heifer that is a standout in the pen off the underrated and hard working Ladybate cow family. Another one that is one we could easily keep.



HA OUTSIDE 5161

MALE IMP 5161C FEBRUARY 24 2015 1950587

MOGCK SURE SHOT
KG SOLUTION 0018
KG RITO LADY 8724L

Sire: HA OUTSIDE 3008

S A V BISMARCK 5682
HA EVER LADY 1575
HA EVER LADY 8066

H A R B WINDY 702 J H
APEX WINDY 078
APEXETTE LUCY 6037

Dam: HA BLACKCAP LADY 2338

PAPA FORTE 1921
H A BLACKCAP LADY 1055
H A RITO BLACKCAP 9038

| | |
|------|------|
| BW | 92 |
| WW | 665 |
| YW | 1302 |
| BEPD | +0.6 |
| WEPD | +42 |
| YEPD | +70 |
| Milk | +33 |
| TM | +54 |



| Calves | Avg BW | Adj 205 | Adj 365 |
|---------|--------|---------|----------|
| Males | 85 lbs | 692 lbs | 1222 lbs |
| Females | 78 lbs | 619 lbs | 854 lbs |

lot
75

CRESCENT CREEK DUCHESS 29H

Female WOS 29H January 18 2020 2152510

HA OUTSIDE 5161

FIGURE 8 ANGUS TOM BOY 509R
LOOKOUT HUCK 53T
LOOKOUT EDNA 145L

CRESCENT CREEK DUCHESS 125W

MINBURN MAIN EVENT 82R
CRESCENT CREEK DUCHESS 90T
CRESCENT CREEK DUCHESS 27P

| | |
|--------|-----|
| BW | 82 |
| WW | 659 |
| YW | 878 |
| B EPD | 2.5 |
| W EPD | 45 |
| Y EPD | 74 |
| Milk | 31 |
| CE EPD | 3 |



The 5161 heifers have been a pleasure to watch grow and calve out. Moderate, tight utters, and maternal power. They are up and coming herd builders for anyone and the best place to start is this gal. A moderate heifer with capacity and style that you will notice right when you walk into the pen. I will venture to say this one will find many friends sale day.

lot
76

CRESCENT CREEK DUCHESS 54H

Female WMO 54H January 24 2020 2177932

HA OUTSIDE 5161

SINCLAIR ENTREPRENEUR 8R101
MC CUMBER 8R101 RITO 1136
MISS WIX 7176 OF MC CUMBER

CRESCENT CREEK DUCHESS 19A

LOOKOUT HUCK 53T
CRESCENT CREEK DUCHESS 63W
CRESCENT CREEK DUCHESS 18T

| | |
|--------|-----|
| BW | 86 |
| WW | 673 |
| YW | 872 |
| B EPD | 2.8 |
| W EPD | 51 |
| Y EPD | 84 |
| Milk | 26 |
| CE EPD | 1 |



Moderate and smooth heifer with a great hair coat and nice teat formation coming in. A great foot under her and has signs to grow into a great mother and herd build. The Duchess cow family is quickly becoming a prolific family here.

lot
77**CRESCENT CREEK HEROINE 34H**

Female WOS 34H January 20 2020 2152514

HA OUTSIDE 5161

SANDY BAR IDEAL 19S 185W
SANDY BAR IDEAL 185W 216Y
SANDY BAR NEONIA 54W

IVANHOE HEROINE 46C

YOUNG DALE T D 58R
IVANHOE HEROINE 11W
EASTONDALE HEROINE 9'00

A super stylish and functional heifer that is really something to see. Mark her down to see and out of an exceptional, hard working Ivanhoe female.

| | |
|--------|-----|
| BW | 84 |
| WW | 583 |
| YW | 772 |
| B EPD | 3.5 |
| W EPD | 45 |
| Y EPD | 77 |
| Milk | 26 |
| CE EPD | -1 |

lot
78**CRESCENT CREEK LASSIE 50H**

Female WOS 50H January 23 2020 2152524

HA OUTSIDE 5161

STEVENSON FORTUNE 425C
CRESCENT CREEK FORTUNE 67X
CRESCENT CREEK ROSEBUD 15U

CRESCENT CREEK LASSIE 57B

MINBURN MAIN EVENT 82R
CRESCENT CREEK LASSIE 24W
CRESCENT CREEK LASSIE 48N

One of Mark's favorite when he toured. The real appealing Lassie family and that she is. She is thick and stylish and somehow always finds herself in front of you. Another one we'd be ok with keeping her too.

| | |
|--------|-----|
| BW | 95 |
| WW | 616 |
| YW | 863 |
| B EPD | 4.8 |
| W EPD | 45 |
| Y EPD | 73 |
| Milk | 27 |
| CE EPD | -3 |

lot
79**CRESCENT CREEK QUEEN RUTH 80H**

Female WMO 80H January 30 2020 2154236

HA OUTSIDE 5161

S A V BEST INTEREST 0136
SOO LINE BEST INTEREST 2142
LIMESTONE RUBYOFTIFFANY U409

BAR D K QUEEN RUTH 57'14

BEVERLY HILLS FANDANGO 404
BAR D K QUEEN RUTH 28'11
CRESCENT CREEK QUEEN RUTH 46L

The Outside mating has worked great for Bar DK 57B. 80H being a full Sib to the high selling bull in the 21st annual sale to Midland Cattle Co. As well a half sibling to last years high selling bull MCS Angus. An exciting daughter to buy and one Wade will miss.

| | |
|--------|-----|
| BW | 85 |
| WW | 587 |
| YW | 81 |
| B EPD | 3.4 |
| W EPD | 45 |
| Y EPD | 82 |
| Milk | 29 |
| CE EPD | 0 |

lot
80**CRESCENT CREEK BARDOLIA 105H**

Female WOS 105H February 05 2020 2180195

HA OUTSIDE 5161

S CHISUM 6175
S CHISUM 0206
S VANNA 358

BAR D K BARDOLIA 64'13

B.B.A.R RIO LOBO 7522
WHITESAND BARDOLIA 12X
BARDOLIA OF PEAK DOT 850P

Smooth and stylish 5161 daughter that's real appealing to see. We could write and write but it's just way easier to come see them all as a pen.

| | |
|--------|-----|
| BW | 88 |
| WW | 677 |
| YW | 876 |
| B EPD | 3.6 |
| W EPD | 46 |
| Y EPD | 78 |
| Milk | 29 |
| CE EPD | 0 |



lot
81**CRESCENT CREEK ROSEBUD 106H**

Female WOS 106H February 05 2020 2158182

HA OUTSIDE 5161

LOOKOUT PACESETTER 258M
CRESCENT CREEK PACESETTER 16U
CRESCENT CREEK STUMPIE 9R

CRESCENT CREEK ROSEBUD 149B

GDAR QUANTUM 963
CRESCENT CREEK ROSEBUD 70M
CRESCENT CREEK ROSEBUD 38K

| | |
|--------|-----|
| BW | 84 |
| WW | 608 |
| YW | 797 |
| B EPD | 1.2 |
| W EPD | 32 |
| Y EPD | 56 |
| Milk | 26 |
| CE EPD | 4 |

Deep, thick, and smooth outside heifer with the great and consistent Outside foot. One that you will notice across the pen and look even better in your pen at home.

lot
82**CRESCENT CREEK ROSEBUD 132H**

Female WOS 132H February 16 2020 2161527

HA OUTSIDE 5161

LOOKOUT PACESETTER 258M
CRESCENT CREEK PACESETTER 16U
CRESCENT CREEK STUMPIE 9R

CRESCENT CREEK ROSEBUD 119B

SITZ HERITAGE 10709
CRESCENT CREEK ROSEBUD 7R
CRESCENT CREEK ROSEBUD 115F

| | |
|--------|-----|
| BW | 74 |
| WW | 610 |
| YW | 762 |
| B EPD | 0.1 |
| W EPD | 34 |
| Y EPD | 58 |
| Milk | 24 |
| CE EPD | 7 |

The Rosebud look is in this heifer. A cow in the making with a stylish look and dates back to the great 115F who made waves in the angus industry once again. The Rosebud family is the greatest family to walk here and you could add the best part of Crescent Creek to your herd!

lot
83**CRESCENT CREEK JESTRESS 145H**

Female WOS 145H February 22 2020 2187122

KG SOLUTION 0018
HA OUTSIDE 3008
HA EVER LADY 1575

HA OUTSIDE 5307

SITZ NEW DESIGN 349M
HA BLACKCAP LADY 6620
HA BLACKCAP LADY 3833

NORTHERN VIEW QUANTUM 86P
NORTHERN VIEW QUANTUM 83W
WWF AMBUSH BELLE 166P

WWF QUANTUM JESTRESS 79Z

KBJ MAIN EVENT 8055
WWF MN EVENT JESTRESS 54U
WWF FAMOUS JESTRESS 15L

| | |
|--------|------|
| BW | 65 |
| WW | 555 |
| YW | 780 |
| B EPD | -0.7 |
| W EPD | 40 |
| Y EPD | 75 |
| Milk | 27 |
| CE EPD | 11 |



A real sweetheart of a heifer out of a hard working Windy Willows cow. Colin always knew how to raise the good ones. They really fit in here nicely and sure have produced well.



MACNAB SCOTCHMAN 379E

Male CSM 379E March 16 2017 1956423

E X A R SCOTCH CAP 816
RR SCOTCHMAN 2999
ERICA LASSIE OF R R 8464

SHEIDAGHAN GREAT SCOT 44Z

CRESCENT CREEK TRADITION 177S
SHEIDAGHAN ELBA 860U
CRESCENT CREEK ELBA 152S

HF KODIAK 5R
HF TIGER 5T
HF ECHO 84R

MACNAB IVY 379Y

F A R KRUGERRAND 410H
MACNAB IVY 2R
WAVENY IVY 4K

| | |
|--------|------|
| BW | 85 |
| WW | 906 |
| YW | 81 |
| CE | |
| B EPD | -0.3 |
| W EPD | 43 |
| Y EPD | 81 |
| Milk | 24 |
| CE EPD | 11 |



| | | | |
|---------|--------|---------|----------|
| Calves | Avg BW | Adj 205 | Adj 365 |
| Males | 81 lbs | 640 lbs | 1178 lbs |
| Females | 79 lbs | 593 lbs | 813 lbs |

lot
84

CRESCENT CREEK LASSIE 25H

Female WOS 25H January 17 2020 2152509

MACNAB SCOTCHMAN 379E

SITZ ALLIANCE 659S
CRESCENT CREEK ALLIANCE 29N
KBJ MISS COMPRESS 862K

CRESCENT CREEK LASSIE 31C

B S S LIMITED DESIGN DDF
CRESCENT CREEK LASSIE 48N
CRESCENT CREEK LASSIE 33H

| | |
|--------|-----|
| BW | 84 |
| WW | 605 |
| YW | 903 |
| B EPD | 1.6 |
| W EPD | 46 |
| Y EPD | 93 |
| Milk | 23 |
| CE EPD | 7 |



The lead off 379 heifer and rightfully so, dating back to the great 48N. This heifer has a bright future with this great pedigree and the track record of the 48N cow. Take a look here.

lot
85

CRESCENT CREEK LASSIE 101H

Female WOS 101H February 4 2020

MACNAB SCOTCHMAN 379E

SITZ ALLIANCE 659S
CRESCENT CREEK ALLIANCE 29N
KBJ MISS COMPRESS 862K

CRESCENT CREEK LASSIE 5C

B S S LIMITED DESIGN
CRESCENT CREEK LASSIE 48N
CRESCENT CREEK LASSIE 33H

| | |
|--------|-----|
| BW | 68 |
| WW | 639 |
| YW | 856 |
| B EPD | 0.7 |
| W EPD | 38 |
| Y EPD | 76 |
| Milk | 24 |
| CE EPD | 10 |



This one grows on us everyday and is rising to the top of the pen. Dating back to the great Lassie 48N, who needs no introduction.

lot
86

CRESCENT CREEK CRUSHMAID 78H

Female WOS 78H January 29 2020 2154255

MACNAB SCOTCHMAN 379E

S CHISUM 6175
S CHISUM 0206
S VANNA 358

CRESCENT CREEK CRUSHMAID 126D

DRYLAND CHIEF 307
DRYLAND CRUSHMAID 732
DRYLAND CRUSH MAID 536

| | |
|--------|-----|
| BW | 76 |
| WW | 602 |
| YW | 849 |
| B EPD | 1 |
| W EPD | 39 |
| Y EPD | 77 |
| Milk | 25 |
| CE EPD | 7 |



The Crushmaid cow family just works. These girls continue to raise the good one's and the quality ones. A real good matching match here.

lot
87

CRESCENT CREEK LADY BATE 85H

Female WOS 85H January 31 2020 2154258

MACNAB SCOTCHMAN 379E

CHAPMAN MEMENTO 0505X
CHAPMAN MEMENTO 3589A
CHAPMAN KAWICH LADY 8065U

CRESCENT CREEK LADY BATE 10D

CRESCENT CREEK PACESETTER 16U
CRESCENT CREEK LADY BATE 49Z
CRESCENT CREEK LADY BATE 98X

| | |
|--------|-----|
| BW | 80 |
| WW | 633 |
| YW | 863 |
| B EPD | 1.7 |
| W EPD | 43 |
| Y EPD | 72 |
| Milk | 23 |
| CE EPD | 4 |



lot
88

CRESCENT CREEK ELLEN ERICA 66H

Female WMO 66H January 27 2020 2154228

MACNAB SCOTCHMAN 379E

SINCLAIR ENTREPRENEUR 8R101
MC CUMBER 8R101 RITO 1136
MISS WIX 7176 OF MC CUMBER

CRESCENT CREEK ELLEN ERICA 79D

LOOKOUT PACESETTER 258M
MINBURN ELLEN ERICA 52X
MINBURN ELLEN ERICA 191T

| | |
|--------|------|
| BW | 72 |
| WW | 597 |
| YW | 728 |
| B EPD | -0.2 |
| W EPD | 35 |
| Y EPD | 63 |
| Milk | 21 |
| CE EPD | 8 |



lot
89

CRESCENT CREEK ROSEBUD 142H

Female WOS 142H February 19 2020 2161534

MACNAB SCOTCHMAN 379E

S MCCOY 124
S MCCOY 373 OSF
S JASMINE 492

CRESCENT CREEK ROSEBUD 187D

CRESCENT CREEK PACESETTER 16U
CRESCENT CREEK ROSEBUD 048B
CRESCENT CREEK ROSEBUD 24L

| | |
|--------|-----|
| BW | 77 |
| WW | 604 |
| YW | 706 |
| B EPD | 0.1 |
| W EPD | 36 |
| Y EPD | 63 |
| Milk | 22 |
| CE EPD | 7 |



Lot 89

This heifer doesn't need a write up. If you see Rosebud in cow's pedigree, then you know what quality you're buying.

lot
90

CRESCENT CREEK ROSEBUD 160H

Female WOS 160H February 25 2020 2165670

MACNAB SCOTCHMAN 379E

GAR-EGL PROTEGE
PA FORTITUDE 2500
G G CLARA 0171

CRESCENT CREEK ROSEBUD 41C

RR SCOTCHMAN 2999
CRESCENT CREEK ROSEBUD 101T
CRESCENT CREEK ROSEBUD 70M

| | |
|--------|------|
| BW | 68 |
| WW | 640 |
| YW | 866 |
| B EPD | -0.8 |
| W EPD | 43 |
| Y EPD | 86 |
| Milk | 22 |
| CE EPD | 11 |



Lot 90

Another Rosebud dating back to the great 101T who has her pedigree in the book more than a few times and a huge influence in the flush brother's trio.

MESSAGE FROM LONGTIME CUSTOMER KEITH JOHNSON

"It was good dealing with you guys over there over the past 20 years. I appreciate your program and your guidance in my purchases over the years. I can safely say I have never had a bad bull out of your sales. And we gained a couple friends to boot."



SFL HIGH VOLTAGE 866F

Male SFL 866F February 5 2018 2047523

CONNEALY STIMULUS 8419
CONNEALY SPUR
JAZZA OF CONANGA 8594

VERMILION HUNTLEY

SITZ MADISON 10477
VERMILION BARBARAMERE 0738
VERMILION BARBARAMERE 2156

LEACHMAN RIGHT TIME
B HILLS FRL DURATION 606
H A BELETTA 0219

B HILLS JL FOREVER LADY 010

DLMJ IMAGE MAKER 2S
LLB FOREVER LADY 664U
DRYLAND FOREVER LADY 354

| | |
|--------|------|
| BW | 88 |
| WW | 700 |
| YW | 1323 |
| B EPD | 2.8 |
| W EPD | 56 |
| Y EPD | 104 |
| Milk | 25 |
| CE EPD | 1 |



| | | | |
|---------|--------|---------|----------|
| Calves | Avg BW | Adj 205 | Adj 365 |
| Males | 84 lbs | 669 lbs | 1177 lbs |
| Females | 77 lbs | 650 lbs | 849 lbs |

lot
91

CRESCENT CREEK ESTHER 22H

Female WOS 22H January 15 2020 2151470

SFL HIGH VOLTAGE 866

VIN-MAR O'REILLY FACTOR
AW FACTOR 2C
AW TOPSY 25A

CRESCENT CREEK ESTHER 12E

S GRID MAKER 0258
AW ESTHER 54C
AWH ESTHER 38R

| | |
|--------|-----|
| BW | 75 |
| WW | 696 |
| YW | 950 |
| B EPD | 1.7 |
| W EPD | 59 |
| Y EPD | 111 |
| Milk | 28 |
| CE EPD | 4 |



A beautiful and powerful heifer that you will see right when you walk into the pen. The Esther cow family has done nothing but improved our herd and the females in it. Allen raised the best ones, and we are ecstatic to have some of those breeding pieces improving our herd.

lot
92

CRESCENT CREEK ROSEBUD 33H

Female WOS 33H January 19 2020 2152512

SFL HIGH VOLTAGE 866

HA OUTSIDE 3008
HA OUTSIDE 5161
HA BLACKCAP LADY 2338

CRESCENT CREEK ROSEBUD 173E

CRESCENT CREEK PACESETTER 16U
CRESCENT CREEK ROSEBUD 47B
CRESCENT CREEK ROSEBUD 101T

| | |
|--------|-----|
| BW | 77 |
| WW | 634 |
| YW | 837 |
| B EPD | 2.4 |
| W EPD | 49 |
| Y EPD | 88 |
| Milk | 24 |
| CE EPD | 3 |



These High-voltage heifers are something to see. Beautiful style, thick, and correct type of cattle. Another great mating here with the Rosebud cow family. Once again note the 101T and her influence on these outstanding females.

lot
93

CRESCENT CREEK CRUSHMAID 46H

Female WOS 46H January 22 2020 2152522

CONNEALY SPUR
VERMILION HUNTLEY
VERMILION BARBARAMERE 0738

SFL HIGH VOLTAGE 866

B HILLS FRL DURATION 606
B HILLS J L FOREVER LADY 010
LLB FOREVER LADY 664U

CRESCENT CREEK FORTUNE 67X
CRESCENT CREEK FORTUNE 169C
CRESCENT CREEK QUEEN RUTH 14W
CRESCENT CREEK CRUSHMAID 169F

DRYLAND CHIEF 307
DRYLAND CRUSHMAID 732
DRYLAND CRUSH MAID 536

| | |
|--------|-----|
| BW | 77 |
| WW | 691 |
| YW | 915 |
| B EPD | 2 |
| W EPD | 43 |
| Y EPD | 73 |
| Milk | 25 |
| CE EPD | 4 |



Lot 93

lot
94

CRESCENT CREEK EULA 73E

Female WOS 73H January 28 2020 2158189

SFL HIGH VOLTAGE 866

S MCCOY 124
S MCCOY 373 OSF
S JASMINE 492

CRESCENT CREEK EULA 94E

MC CUMBER 8R101 RITO 1136
CRESCENT CREEK EULA 124C
CRESCENT CREEK EULA 134R

| | |
|--------|-----|
| BW | 78 |
| WW | 604 |
| YW | 836 |
| B EPD | 1.7 |
| W EPD | 45 |
| Y EPD | 83 |
| Milk | 23 |
| CE EPD | 3 |

When you buy a Eula, you buy quality. Nothing less is expected with this one. Deep, thick, and structural soundness here.



Lot 94

lot
95

CRESCENT CREEK DUCHESS 92H

Female WOS 92H February 02 2020 2158176

SFL HIGH VOLTAGE 866

SINCLAIR FORTUNATE SON
CRESCENT CREEK FORTUNATE 8B
CRESCENT CREEK ROSEBUD 124X

CRESCENT CREEK DUCHESS 131E

CRESCENT CREEK PACESETTER 16U
CRESCENT CREEK DUCHESS 179A
CRESCENT CREEK DUCHESS 81R

| | |
|--------|-----|
| BW | 68 |
| WW | 562 |
| YW | 765 |
| B EPD | 0.2 |
| W EPD | 37 |
| Y EPD | 71 |
| Milk | 20 |
| CE EPD | 7 |



Lot 95

lot
96

CRESCENT CREEK LASSIE 120H

Female WOS 120H February 12 2020 2161522

SFL HIGH VOLTAGE 866

LOOKOUT PACESETTER 258M
CRESCENT CREEK PACESETTER 16U
CRESCENT CREEK STUMPIE 9R

CRESCENT CREEK LASSIE 178E

BRONYX EMBLAZON 58T
CRESCENT CREEK LASSIE 38X
CRESCENT CREEK LASSIE 48N

| | |
|--------|-----|
| BW | 66 |
| WW | 660 |
| YW | 849 |
| B EPD | 0.7 |
| W EPD | 44 |
| Y EPD | 73 |
| Milk | 21 |
| CE EPD | 6 |

Another attractive Lassie heifer that you will love in person. Note yet another quality heifer dating back to the great 48N cow. Buy quality here.



Lot 96

lot
97**CRESCENT CREEK CRUSHMAID 138H**

Female WOS 138H February 17 2020 2161531

SFL HIGH VOLTAGE 866

SINCLAIR FORTUNATE SON
CRESCENT CREEK FORTUNATE 8B
CRESCENT CREEK ROSEBUD 124X

CRESCENT CREEK CRUSHMAID 15E

CRESCENT CREEK PACESETTER 16U
CRESCENT CREEK CRUSHMAID 90A
DRYLAND CRUSHMAID 732

| | |
|--------|-----|
| BW | 84 |
| WW | 616 |
| YW | 798 |
| B EPD | 2.4 |
| W EPD | 41 |
| Y EPD | 74 |
| Milk | 23 |
| CE EPD | 1 |

lot
98**CRESCENT CREEK JOAN 143H**

Female WOS 143H February 19 2020 2161535

SFL HIGH VOLTAGE 866

EF COMPLEMENT 8088
EF COMMANDO 1366
RIVERBEND YOUNG LUCY W1470

CRESCENT CREEK JOAN 46E

O C C GREAT PLAINS 943G
GDAR JOAN 9175
RA JOAN J6

| | |
|--------|-----|
| BW | 88 |
| WW | 680 |
| YW | 883 |
| B EPD | 3 |
| W EPD | 53 |
| Y EPD | 95 |
| Milk | 25 |
| CE EPD | 1 |



The Joan cow family is well known here. Selling many quality cattle from the cow family and even a "Pick of the Heifer Calves" being a Joan. It all started with the great Joan 9175 who is the mother of the Lot 10 bull and grandmother to this attractive female.

lot
99**CRESCENT CREEK CRUSHMAID 162H**

Female WOS 162H February 25 2020 2165668

SFL HIGH VOLTAGE 866

DOUBLE AA BARDOLINE 50'08
FLEURY BARDOLINE 115B
DOUBLE AA ANNIE K 295'06

CRESCENT CREEK CRUSHMAID 162E

DRYLAND CHIEF 307
DRYLAND CRUSHMAID 732
DRYLAND CRUSH MAID 536

| | |
|--------|-----|
| BW | 77 |
| WW | 639 |
| YW | 842 |
| B EPD | 3.1 |
| W EPD | 41 |
| Y EPD | 75 |
| Milk | 24 |
| CE EPD | 1 |

lot
100**CRESCENT CREEK HEROINE 181H**

Female KOS 181H March 10 2020 2168439

SFL HIGH VOLTAGE 866

LOOKOUT PACESETTER 258M
CRESCENT CREEK PACESETTER 16U
CRESCENT CREEK STUMPIE 9R

CRESCENT CREEK HEROINE 151E

BRONYX EMBLAZON 58T
CRESCENT CREEK HEROINE 2X
CRESCENT CREEK HEROINE 0135S

| | |
|--------|-----|
| BW | 78 |
| WW | 674 |
| YW | 834 |
| B EPD | 2.3 |
| W EPD | 48 |
| Y EPD | 78 |
| Milk | 19 |
| CE EPD | 2 |



lot
101**CRESCENT CREEK MELODY 17H**

Female WMO 17H January 14 2020

CAR NEXT STEP 889

S MCCOY 124
S MCCOY 373
S JASMINE 492

CRESCENT CREEK MELODY 91F

U-2 NIGHTTRAIN 422A
EVERBLACK MELODY 48D
DCC MELODY 3M

| | |
|--------|-----|
| BW | 83 |
| WW | 725 |
| YW | 943 |
| B EPD | 4.2 |
| W EPD | 68 |
| Y EPD | 116 |
| Milk | 28 |
| CE EPD | -1 |



The one and only Nextstep daughter to sell. Wade will be kicking him self selling this one but you can capitalize on it. A feminine, deep, and attractive female. We are very excited to see how these females have turned out so far and how they will turn into mothers. The quality is deep just like the 2 lead off bulls. Attractive and functional as they come.

lot
REF**CRESCENT CREEK FORTUNATE 8B**

Male WOS 8B JANUARY 23 2014 1814288

SINCLAIR EXTRA 4X13
SINCLAIR EMULATE 7XT28
SINCLAIR BLACKBIRD 20F3 6417

SINCLAIR FORTUNATE SON

N BAR PRIME TIME D806
SINCLAIR BLACKBIRD 2P8 7079
RITO 707 OF IDEAL 089 7076

LOOKOUT PACESETTER 258M
CRESCENT CREEK PACESETTER 16U
CRESCENT CREEK STUMPIE 9R

CRESCENT CREEK ROSEBUD 124X

RR SCOTCHMAN 2999
CRESCENT CREEK ROSEBUD 86U
CRESCENT CREEK ROSEBUD 99N

| | |
|--------|------|
| BW | 86 |
| WW | 700 |
| YW | 1205 |
| B EPD | 1.3 |
| W EPD | 44 |
| Y EPD | 82 |
| Milk | 18 |
| CE EPD | 1 |



| Calves | Avg BW | Adj 205 | Adj 365 |
|---------|--------|---------|----------|
| Males | 86 lbs | 712 lbs | 1224 lbs |
| Females | 78 lbs | 623 lbs | 896 lbs |

lot
102**CRESCENT CREEK HEROINE 141H**

Female KOS 141H February 22 2020 2165619

CRESCENT CREEK FORTUNATE 8B

LOOKOUT HUCK 53T
CRESCENT CREEK TOMBOY 15W
CRESCENT CREEK ROSEBUD 6R

CRESCENT CREEK HEROINE 64Z

CAR IDEAL 061
CRESCENT CREEK HEROINE 167T
CRESCENT CREEK HEROINE 13L

| | |
|--------|-----|
| BW | 83 |
| WW | 637 |
| YW | 769 |
| B EPD | 3.1 |
| W EPD | 38 |
| Y EPD | 67 |
| Milk | 19 |
| CE EPD | -2 |



lot
103

CRESCENT CREEK ROSEBUD 149H

Female WOS 149H February 22 2020 2165653

CRESCENT CREEK FORTUNATE 8B

LOOKOUT PACESETTER 258M
CRESCENT CREEK PACESETTER 16U
CRESCENT CREEK STUMPIE 9R

CRESCENT CREEK ROSEBUD 19X

RR SCOTCHMAN 2999
CRESCENT CREEK ROSEBUD 199S
CRESCENT CREEK ROSEBUD 35J

| | |
|--------|------|
| BW | 69 |
| WW | 564 |
| YW | 753 |
| B EPD | -0.6 |
| W EPD | 36 |
| Y EPD | 61 |
| Milk | 16 |
| CE EPD | 6 |

Rosebud female that is deep and has lots of attractive traits. Buy with confidence here.



Lot 103

lot
104

CRESCENT CREEK ERROLINE 150H

Female WMO 150H February 22 2020 2165686

CRESCENT CREEK FORTUNATE 8B

DB OBJECTIVE TREND 861
SANDY BAR OT 16X
SANDY BAR LINDA 29S

MCS ERROLINE 39C

WILBAR TITLEIST 600T
MCS ERROLINE 11Y
MCS ERROLINE 8R

| | |
|--------|-----|
| BW | 100 |
| WW | 640 |
| YW | 829 |
| B EPD | 4.9 |
| W EPD | 40 |
| Y EPD | 72 |
| Milk | 22 |
| CE EPD | -6 |



Lot 104

lot
105

CRESCENT CREEK ROSEBUD 67H

Female ET WOS 67H January 27 2020 2189429

SITZ DASH 10277
BARSTOW CASH
BARSTOW QUEEN W16

LOOKOUT PACESETTER 258M
CRESCENT CREEK PACESETTER 16U
CRESCENT CREEK STUMPIE 9R

BSF HOT LOTTO 1401

SILVEIRAS EL CAPITAN 6510
BSF PRINCESS EL CAP W2
B S F PRINCESS TCF N2

CRESCENT CREEK ROSEBUD 124X

RR SCOTCHMAN 2999
CRESCENT CREEK ROSEBUD 86U
CRESCENT CREEK ROSEBUD 99N

| | |
|--------|-----|
| BW | 65 |
| WW | 685 |
| YW | 810 |
| B EPD | 1.8 |
| W EPD | 60 |
| Y EPD | 98 |
| Milk | 20 |
| CE EPD | 4 |

This little lady loved bale grazing so much she actually escaped back to the cow herd and did not come back to the yard until the first week in January!



Lot 105

lot
106

CRESCENT CREEK STUMPIE 98H

Female KOS 98H February 07 2020 2184231

YOUNG DALE KNOCK OUT 134U
YOUNG DALE XCALIBER 32X
BROOKMORE TIBBIE 222T

YOUNG DALE DUPLICATE 137D

YOUNG DALE EL DORADO 11R
YOUNG DALE PRIDE 97T
YOUNG DALE PRIDE 40G

SITZ WISDOM 481T
KG WISDOM 1419
DJ ERISKAY S014

CRESCENT CREEK STUMPIE 178B

LOOKOUT PACESETTER 147L
FIGURE 8 ANGUS STUMPIE 12N
FIGURE 8 ANGUS STUMPIE 112K

| | |
|--------|-----|
| BW | 84 |
| WW | 602 |
| YW | 822 |
| B EPD | 4 |
| W EPD | 52 |
| Y EPD | 90 |
| Milk | 14 |
| CE EPD | -3 |

The only Stumpie female to sell this year. The quality of the Stumpie females are second to none. They have raised some of the best quality cattle to walk here. A heifer dating back to the great 12N.



Lot 106

Thank You 2020 BUYERS

MCS ANGUS*
TOM HOWE*
SCHIESTEL CONSULTING
BRYAN YASKIW*
WILLEM BOOGAARD*
BRYAN STADNYK*
LINDSAY HORVATH*
JOE OLSON*
VAUGHN DEMETRICK*
DOUG & MARLENE LYON
JOE BAJUS
JEREMY ANDREW
TRI STEP RANCH*
CARL KRISTJANSON*
DUANE THOMPSON*
IVANHOE ANGUS*
GARY HILLIAR*

MARSH RANCH*
LEN MALINOWSKI*
GREG BODNAR*
KERRY O'DONNELL
NORDAL FARMS*
LLB ANGUS*
HOWARD ARNOLD
KIRK SHARP
JOHN ORR*
DWAYNE HIRD*
RODGER MUTCH*
PAUL DMYTROW
TRACEY WESSING*
JESSICA DAVEY
MIDLAND CATTLE CO.*
JASON BECKER*
NATHON GUILLOUX*

JARED MARTEN*
DANNY & JACKIE SAWLEY*
ZUCHKAN LAND & LIVESTOCK*
THREE ROSES RANCH*
WYATT ISAACSON*
DARRYL BIERWAGON*
KEVIN HARMS
SHEIDAGHAN ANGHUS*
DREW PUTLAND*
DAN PETHERBRIDGE*
WADE WINTERS*
YANUSH ENTERPRISES*
PINEGROVE ANGUS*
SPILCHUK FARMS LTD.*
GERRAD WENZEL*
RYAN & LENNA NIELSON*
FRED LANSDALL*

* Repeat Buyers

We are proud to support the Canadian Angus Foundation 15 for 50 Program

With **YOUR** help we will continue to further the Foundation's mission and the breed.

15%
of a lot
means
a lot...

In 2019 over \$80,000 was **INVESTED** in member education, awards, bursaries and youth scholarships.

\$180,000 invested in **ANGUS** research over the last three years leveraged an additional \$360,000 in grant funding.

\$60,000+ has been invested in history and archives, including the 2019 Canadian Angus history book.

If you are interested in giving back or learning more about this new initiative, please contact Belinda Wagner, Canadian Angus Foundation Executive Director at 306-757-6133 or email bwagner@cdnangus.ca. You can also visit the Canadian Angus Foundation website at www.cdnangus.ca/foundation/.



The Canadian Angus Foundation functions to preserve and expand the Angus breed for future generations through education, youth development, scientific and market research, and historical preservation and restoration. The Canadian Angus Foundation was incorporated in 1993 and is the charitable arm of the Canadian Angus Association. Donations are tax deductible.

Crescent Creek Rosebud 101T

Longevity, Soundness & Functionality in one package

2021 Sale Flush Siblings



2021 Sale Granddaughter



2021 Sale Great Granddaughter



14 Years of production
& counting

2020 / 2021

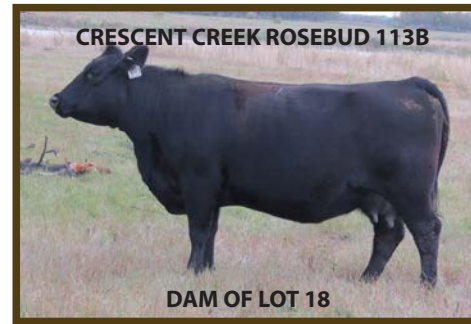




The 2020 Sale Looked a Bit Different Than Usual...



C R E S C E N T F E M C



STOCKMAN SELECT SALE

Next Sale: December 2021

We would like to thank all the producers who consigned their females to the STOCKMAN SELECT bred female sale held at WHITEWOOD AUCTION. The positive remarks of the quality of the offering bodes well to this becoming an excellent avenue to merchandising your product. Crescent Creek is proud to sponsor this sale of females that are either bred to or offspring of our genetics. The females must be bred by the owner. It is our goal to enhance the profitability of our dedicated customer base.

IN 2020 46 BRED HEIFERS AVERAGED \$2025 WITH HIGHS UP TO \$2400
KEEP THIS SALE IN MIND AS YOU MAKE YOUR SELECTION OF REPLACEMENTS THIS SPRING OR FALL.



CREEK ANGUS FAMILY

CRESCENT CREEK QUEEN RUTH 56T



DAM OF LOT 21 & GRANDDAM OF LOT 31

CRESCENT CREEK ROSEBUD 80Z



DAM OF LOT 46 & GRANDDAM OF LOT 18

CRESCENT CREEK DUCHESS 125W



DAM OF LOT 74

CRESCENT CREEK ROSEBUD 82A



DAM OF LOT 29 & REFERENCE SIRE 25E

CRESCENT CREEK BARANDA 104Y



DAM OF LOT 67

CRESCENT CREEK ROSEBUD 83D



DAM OF LOT 6

NOTES

Please return undelivered books to:



Crescent Creek Angus
Box 192
Goodeve, SK, Canada
S0A 1C0



Lot 67



Lot 68



Lot 92



Lot 1



Lot 10



Lot 46

JOIN US MARCH 20 & 21 FOR OUR OPEN HOUSE